

LADY PANTHERS

SWAC REGULAR SEASON CHAMPIONS • 2007 • 2008 • 2009
 SWAC TOURNAMENT CHAMPIONS • 2007 • 2009 • 2011 • 2012 • 2013

DATE	OPPONENT	TIME/RESULT
11-8	RICE	L, 77-63
11-13	@ Texas A&M	L, 76-27
11-17	@ Florida State	L, 88-37
11-30	%vs. Stephen F. Austin	L, 76-70
12-1	%@ Houston	L, 74-46
12-6	@ Florida International	L, 77-52
12-14	# vs. James Madison	L, 79-50
12-15	# vs. Drexel	L, 53-45
12-18	@ Central Michigan	L, 90-66
12-28	@ TCU	L, 76-47
SOUTHWESTERN ATHLETIC CONFERENCE		
1-4	SOUTHERN*	L, 88-74
1-6	ALCORN STATE*	W, 71-68
1-11	@ Texas Southern*	L, 63-59
1-18	@ Jackson State*	L, 83-82 (2OT)
1-20	@ Grambling State*	W, 72-61
1-25	ARKANSAS-PB*	W, 75-62
1-27	MISSISSIPPI VALLEY*	W, 77-59
2-1	@ Alabama State*	W, 58-47
2-3	@ Alabama A&M*	W, 68-60
2-8	TEXAS SOUTHERN*	L, 74-70
2-15	JACKSON STATE*	W, 92-76
2-17	GRAMBLING STATE*	W, 82-75 (2OT)
2-22	@ Arkansas-PB*	W, 80-67
2-24	@ Mississippi Valley*	W, 73-70
3-1	ALABAMA A&M*	W, 98-77
3-3	ALABAMA STATE*	L, 81-78
3-6	@ Southern*	L, 69-59
3-8	@ Alcorn State*	L, 55-48
SOUTHWESTERN ATHLETIC CONFERENCE TOURNEY		
3-13	Alabama State	W, 71-61
3-14	Southern	W, 72-43
3-15	Texas Southern	12:00 p.m.

% - David Jones Memorial Classic @ Houston
 # - St. John's Chartwell's Holiday Classic
 * - Conference Game

ON



PRAIRIE VIEW A&M

LADY PANTHERS

2013-14 Record: 13-17 (13-7 SWAC)
Last Game: Won 72-43 over Southern
Coach: Dawn Brown
Record at Prairie View A&M: 13-17 (1st year)
Career Record: 13-17 (1st year)

TEXAS SOUTHERN

LADY TIGERS

2013-14 Record: 20-11 (15-3 SWAC)
Last Game: Def. Jackson State 79-77 (OT)
Coach: Johnetta Hayes-Perry
Record at TSU: 20-11 (1st year)
Career Record: 62-37 (3rd year)

All home and SWAC games broadcasted live on **KPVU 91.3 FM (www.pvamu.edu/kpvu)**
 All home games streamed live on **PANTHERVISION**

THE OPENING TIP

- The Prairie View A&M women's basketball team returns to the SWAC Tournament Championship Game for the fourth consecutive year and seventh time in eight years as they'll battle SWAC rival Texas Southern on Saturday afternoon at noon in the Toyota Center.
- This is the time of year when PVAMU shines as the Lady Panthers are the reigning three-time SWAC Tournament Champion with a 11-0 postseason mark since 2011. Since returning to tourney play in 2007, PVAMU is 19-2 in SWAC Tournament contests with its last tourney loss to Alabama State (first round in Shreveport, La.) in 2010.
- Sophomore post **Shamiya Brooks** has grabbed five or more rebounds in 15 of the team's 18 SWAC contests this season and is averaging 10 rebounds per game in the SWAC Tournament. She also has recorded 54 blocks on the season for an average of 1.9 per game. She has recorded 38 blocks over the past 15 games and has four career double-doubles.
- With the average margin of victory spanning 5.3 points over the past six meetings, an exciting contest is expected as the contest went down to the wire. TSU holds a 32-29 lead in the all-time series and has won four of the past five over PVAMU but fell to PVAMU in last season's SWAC Tournament semifinal.
- TSU head coach **Johnetta Hayes-Perry** is a former assistant at PVAMU from 2005-2007.
- Junior guard **Jeanette Jackson** has doubled her scoring average from last season as she's scoring an average of 19.3 points per outing. She's a four-time SWAC Player of the Week honoree this season, an All-SWAC First Teamer and has already surpassed 1,000 points in her career. She needs 18 points for the all-time PVAMU single season scoring title.
- The Lady Panthers were picked to finish second in the Southwestern Athletic Conference this season after capturing their third consecutive NCAA Tournament Berth and SWAC Tournament Championship in 2013.

PANTHER TO WATCH



#1 • Jeanette Jackson • G • 5-7 • Junior • Las Vegas, Nev.

Jackson continues her solid play with averages of 19.3 points and 3.8 assists per game. She leads the SWAC in scoring while ranking second in free throw percentage (78%), third in assists and third in steals (2.6).

2013-2014 LADY PANTHER BASKETBALL GAME NOTES

WILLIAM NICKS PRESS ROW

The William Nicks Building opens two hours prior to game time. The press row is located on the gym floor of the Williams Nicks Building and can accommodate television, print and radio personnel. Media credentials are required for admittance to press row. Game notes, media guides and programs are provided prior to the game. Play-by-play game accounts will be distributed at the conclusion of each half while a full booklet containing play-by-play and stats provided after the game. Player features and other important information will be forwarded throughout the season on a regular basis.

INTERVIEWS

Prairie View A&M student-athletes (Tue., Wed.) and coaches (Tue., Wed., Thu.) will be available for in-person or phone interviews before or after practice. Requests should be directed to **Ryan McGinty**. **All interview requests must be coordinated through the Sports Information Office with at least one day advance notice.** Student-athlete's phone numbers will not be given out. Coaches and student-athletes are not available for interviews the day before a game or on game day unless arrangements are made in advance.

POSTGAME INTERVIEWS

Prairie View A&M coach Dawn Brown and requested players will be available for interviews immediately following the game at a prearranged location in the William Nicks Building. Prairie View A&M's locker room will remain closed following games. **Prairie View A&M University is committed to a policy of equal access for both male and female reporters and photographers.** The visiting SID will determine the best site and establish interview policies for their coaches and players.

PRACTICE COVERAGE

Media wishing to attend Prairie View A&M basketball practices **must be coordinated through the Sports Information Office with at least one day advance notice.** A member of the Sports Information staff will be on hand at practice to assist the media.

MEDIA CREDENTIALS

Working media and photographer credentials for Prairie View's 2013-14 home games will be handled by the Prairie View A&M Sports Information Office. **Requests should be made in writing** by sports editors or sports directors of accredited media outlets on company letterhead. Requests should be made as early as possible and should be **limited to working media only.** Send credential requests to **Ryan McGinty**, SID: rjmcginty@pvamu.edu; fax 936-261-9159; Prairie View A&M Office of Sports Information, P.O. Box 519, Mail Stop 1500, Prairie View, Texas 77446. Credentials will be mailed to the requesting individual or organization if time permits or sent to the visiting school's sports information director for distribution. Credentials can also be picked up at the will-call window at the William Nicks Building (The Baby Dome).

VISITING RADIO INFORMATION

The official radio broadcast network for the visiting team must be designated in writing by the opposing team SID. For information on radio lines, contact the Prairie View A&M Sports Information Office at 936/261-9140.

PRAIRIE VIEW A&M

Location:..... Prairie View, Texas
Founded:.....1876
Enrollment:.....8,900
Affiliation:..... NCAA I
Conference:..... SWAC
Nickname:..... Panthers
School Colors:..... Purple and Gold
Arena:..... William Nicks Bldg. (3,942)
President:..... Dr. George C. Wright
Dir. of Athletics:..... Ashley Robinson
SWA:..... Alicia Pete

COACHING STAFF

Dawn Brown 1st season
Interim Head Coach

Tron Griffin 2nd season
Assistant Coach

Damon Moore 1st Season
Assistant Coach

Larry McNeil 1st Season
Director Of Player Development

PRAIRIE VIEW A&M SPORTS INFORMATION

Ryan McGinty - SID*

E-mail: rjmcginty@pvamu.edu

**denotes main basketball contact*

Office Phone 936/261-9140

Office FAX 936/261-9159

MAILING ADDRESS

Prairie View A&M University
 Office of Sports Information
 PO Box 519 Mail Stop 1500
 Prairie View, Texas 77446

INTERNET ACCESS

For the latest in the Prairie View A&M University Department of Athletics, please view **www.PVPANTHERS.com**. The site features up-to-date team news, statistics, rosters, depth charts in addition to links of interest.

THIS WEEK IN LADY PANTHER BASKETBALL

MONDAY 10 TUESDAY 11 WEDNESDAY 12 THURSDAY 13 FRIDAY 14 SATURDAY 15 SUNDAY 16

PRACTICE	PRACTICE	PRACTICE	 ALABAMA STATE 5:30 p.m. Houston, Texas	 SOUTHERN 6:00 p.m. Houston, Texas	 TEXASSOUTHERN 12:00 p.m. Houston, Texas	OFF
----------	----------	----------	---	---	--	-----

2013-2014 LADY PANTHER BASKETBALL GAME NOTES

LADY PANTHER NUMERICAL ROSTER

NO.	NAME	POS.	HT.	CL.	HOMETOWN (Previous School)
0	LaReahn Washington	G	5-8	Sr.	Houston, Texas (Booker T. Washington)
1	Jeanette Jackson	G	5-7	Jr.	Las Vegas, Nev. (Sierra Vista)
2	Shamiya Brooks	C	6-4	So.	West Point, Ga. (Troupe County)
3	Alexus Parker	G	5-10	Fr.	Savannah, Ga. (Calvary Day School)
5	Shaneece Stephens	G	5-8	Jr.	Port St. Lucie, Fla. (Brevard CC)
10	Precious Roberts	G	5-9	Jr.	Fernandina Beach, Fla. (Indian River CC)
11	Gabrielle Scott	G	5-7	R-So.	Vanceleave, Miss. (Vanceleave)
13	Taylor Overshown	G	5-10	So.	Houston, Texas (Eisenhower)
22	Larissa Scott	F	6-0	Jr.	Cypress, Texas (Cy Falls)
33	Tonisha Lacey	C	6-3	Sr.	Oakland, Calif. (Pasadena City College)
44	Asha Hampton-Finch	F	6-3	Jr.	San Antonio, Texas (Roosevelt)

COACHING STAFF

Interim Head Coach:	Dawn Brown (Jackson State '05)	4th Season at Prairie View A&M, 1st as head coach
Assistant Coach:	Tron Griffin (Bethune Cookman '06)	2nd Season at Prairie View A&M
Assistant Coach:	Damon Moore (Cleveland State '98)	1st Season at Prairie View A&M
Director of Player Development:	Larry McNeil (Talladega '90)	1st Season at Prairie View A&M



DAWN BROWN **Prairie View A&M University** **Interim Head Coach** **1st Season**

Dawn Brown was named the women's basketball interim head coach on July 1, 2013.

Brown experienced success in her three years under former coach Toyelle Wilson, playing an integral role in winning three-consecutive Southwestern Athletic Conference Tournament Championships. She took on the role as recruiting coordinator for the 2012-13 season.

Prior to becoming the recruiting coordinator, Brown recruited 2012 SWAC All-Tournament center Larissa Scott, 2013 SWAC Tournament MVP Kiara Etienne and do-it-all forward JaQuandria Williams, who contributed heavily to the Lady Panthers last-two SWAC Tournament Championships. Brown recently recruited and signed National Junior College Athletic Association (NJCAA) All-American forward Cameron Vaughn.

"I am excited to help carry on the tradition of winning at Prairie View A&M," Brown, who was named an assistant coach in July 2010, said. "The fans, alumni and supporters are the backbone of our program and that support doesn't waiver whether we are winning or losing. I am inspired by their support and will work hard to make sure that the product they see on the hardwood is one that they will be proud of."

Brown starts the 2013-14 season with a roster full of recruits she had a hand in securing.

"This team – from student-athletes to the managers and coaches – is ready to continue the legacy that has been created here on "The Hill," Brown said.

Before coaching at Prairie View A&M, Brown spent four seasons as an assistant coach at Tougaloo College. With the Bulldogs, Brown played a

major part in turning the program around as the Lady Bulldogs finished the 2009-10 season with their best record in 12 years and advanced to the semifinal round of the Gulf Coast Athletic Conference Tournament.

A 2005 graduate of Jackson State University, she had a two-year career as a student-athlete with the Lady Tigers and helped capture the 2002-03 SWAC Regular Season Co-Championship and a SWAC Tournament semi-final berth.

Before her playing days at Jackson State, Brown a two-time captain at Atlanta Metropolitan College, led the team to two-straight GJCAA Tournament appearances as she was a part of the inaugural team in 2000.

Dawn knows the demands of a Division I student-athletes, as she also excelled in the classroom earning her Bachelor's degree in Sociology in 2005. She also holds memberships in Delta Sigma Theta Sorority, Inc., Order of Eastern Star, Black Colleges & Administrators and the Women's Basketball Coaches Association.

Brown is the proud daughter of William and Imelda Brown.

2013-2014 LADY PANTHER BASKETBALL GAME NOTES

THE LAST TIME THEY MET

Texas Southern 74
Prairie View A&M 70
Sat., Feb. 8, 2014

Brianna Sidney's 29 points fueled Texas Southern University to a 74-70 victory over Prairie View A&M on Saturday at the William Nicks Building.

Sidney scored 19 first half points to carry TSU to a 33-31 halftime lead. She shot 9-of-18 from the field, 5-of-9 from behind the arc and 6-of-7 from the free-throw line for the game. **Jazzmin Parker** chipped 14 points to help lead the Lady Tigers while **Sarah Williams** and **Ashley Ferguson** added 10 points a piece.

TSU shot 47 percent from the field and 41 percent from three point range.

Sidney scored six straight points for a 32-26 lead with 4:21 left to play in the first half but PVAMU came charging back as **Jeanette Jackson** hit five consecutive points to draw within 32-31 with 1:19 on the clock. Williams nailed a basket 19 seconds later to send the Lady Tigers into the locker room ahead 33-31.

TSU led by as many as 13 points in the second half before PVAMU's (6-14,6-4) **Shamiya Brooks** scored a layup to bring the Lady Panthers within one, 71-70 with just 21 seconds left on the clock. Parker knocked down three free throws in the final seconds to help TSU take home the win.

PVAMU had three players finish the game in double digits. Jackson had a team high 27 points, shooting 8-of-19 from the field and 8-of-13 from the line while Brooks notched her fourth double-double on the season with 13 points and 13 rebounds. **LaReahn Washing-**

ton rounded out double figures for the Lady Panthers with 16 points.

THE LAST TIME

TSU holds a 32-29 lead in the all-time series and has won four of the past five over PVAMU.

THE LAST TIME TOURNEY

Prairie View A&M and TSU have little tourney history as the teams have only met once since 1990. Last year's SWAC Tournament in Garland, Texas was the first meeting during that span with PVAMU winning 62-58.

SWAC TOURNEY SUCCESS

This is the time of year when PVAMU shines as the Lady Panthers are the reigning three-time SWAC Tournament Champions with an 11-0 postseason mark since 2011.

Since returning to tourney play in 2007, PVAMU is 19-2 in SWAC Tournament contests.

FAMILY RIVALRY

Located less than an hour apart, PVAMU and TSU have shared many things over the years from ideas, concepts and employees.

It all started in April of 2008 as Texas Southern made several administrative changes in athletics as they lured former PVAMU athletic director **Charles McClelland** to their campus in the same capacity.

Once McClelland got to TSU, several PVAMU staff members rejoined him at TSU including equipment manager **Eddie Davis**, head baseball coach **Michael Robertson**, marketing

director **Steffann Robison** and women's SID **Andrew Roberts**. Eventually, PVAMU's public address announcer left while current head volleyball coach **Jocelyn Adams**, a PVAMU alumnus and former head volleyball coach at the school, left the high school ranks to rebuild the TSU program in 2011. In the spring of 2012, former PVAMU head women's basketball coach **Cynthia Cooper** returned to Houston and TSU after a stint at North Carolina-Wilmington. Although Cooper spent one season at TSU before departing for USC, the ties are still strong as new TSU head women's coach **Jhonna Hayes-Perry** served as a graduate assistant at Prairie View A&M for two seasons.

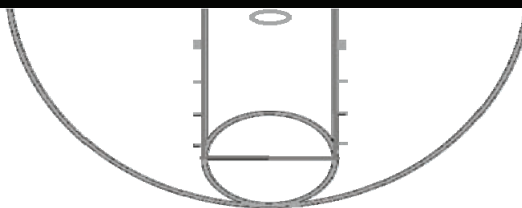
On the Prairie View side, offensive line coach **Prince Pearson** spent four seasons at TSU from 2000 to 2003 before coming to Prairie View A&M in 2004. Offensive coordinator **Mark Orlando** and safeties coach **Bubba McDowell** also spent several years at TSU on its football coaching staff.

In other sports, PV head men's and women's tennis coach **John Cochran** was a standout tennis player at TSU in the 1980s. Also, the Prairie View men's basketball staff has ties to TSU as assistant coaches **Byron Smith**, **Jethro Hillman** and **Ansar Al-Ameen** both coached at TSU while equipment manager **Anthony Johnson** is a TSU graduate.

LADY PANTHER PROBABLE STARTERS

PG
1 • JEANETTE JACKSON
 5-7 • Jr.
 Las Vegas, Nev.

SG
11 • GABRIELLE SCOTT
 5-7 • R-So.
 Van cleave, Miss.



F
22 • LARISSA SCOTT
 6-0 • Jr.
 Cypress, Texas

PG
00 • LAREAHN WASHINGTON
 5-8 • Sr.
 Houston, Texas

C
44 • ASHA HAMPTON-FINCH
 6-2 • Jr.
 San Antonio, Texas

2013-2014 LADY PANTHER BASKETBALL GAME NOTES

GREAT SCOTT

Junior forward **Larissa Scott** was on a roll recently as the Cypress, Texas native posted five consecutive double-doubles from Dec. 18 to Jan. 11.

The streak, which ended Jan. 18, would've remained intact but Scott was forced to come off the bench in double overtime on Jan. 18 in order to keep the Lady Panthers from running out of players and avoiding a technical foul.

Scott, who has missed the past few regular season games with an injury, returned to post-season play with a five-point, six-rebound performance versus Alabama State and a 10-point, seven-rebound outing versus Southern.

For the season, she's averaging a career-high 8.3 points and 8.3 rebounds.

JANUARY TO REMEMBER

Jeanette Jackson averaged 16.5 points per game during the month of December. That was the highest average of her career for a single month before an outstanding January.

She scored 19 or more points in six-consecutive games and won SWAC Player Of The Week during that span also. Those were both firsts for Jackson.

Jackson had an outstanding month of January as she averaged 20.9 points with notable performances of 21, 25, 29 and 30 points.

Once again in February, Jackson was on a roll with 22.1 points per game and has turned it on in March as she's averaging 19.5 points per game.

RECORD PACE

Junior point guard **Jeanette Jackson** is on pace to have one of the top scoring seasons in Prairie View A&M program history and the highest scoring average by a Lady Panther player since **Patricia Walker** averaged 19.9 points per game and amassed 512 total points through 26 games in 1986.

The all-time single season record for points average is 22.1 points per game and 598 total points through 27 games by Walker in 1985.

Alice Ferrell was the only other person in the 1980s to come close to Walker at 448 and a 16-ppg average through 28 games in 1988.

In the 1990's **Frederica Burnice** held the torch for the single season scoring title. During the 1991 season, she scored 432 points, averaging 16.6 points per game in 26 games.

Candice Thomas is the only person in the last decade to come close with 504 total points and a 15.7 ppg average off of 34 games in 2008. Jackson averages 19.2 points and has 481 total points. PVAMU has to win out in order for her to keep pace as she needs 18 points for the single season scoring title.

Known as "JJ", Jackson has joined the 1,000-point club at PVAMU as was the first to do so in only a three-year span.

ACTION JACKSON

Jeanette Jackson is the SWAC's leading scorer at 19.3 points per game.

She leads the SWAC in scoring while ranking second in free throw percentage (78%), third in assists and third in steals (2.6).

BREAKING BROOKS

Sophomore center **Shamiya Brooks** will be counted on to help offset the load inside the paint as the 6-4 Georgia native is the team's tallest player.

Brooks has turned it up a level in SWAC play with a trio of double-doubles against Mississippi Valley State, Jackson State, Alabama A&M and TSU (2/8).

Brooks also ranks second amongst SWAC leaders in blocks per game with 1.9 and is coming off a nine-rebound outing versus Alabama State. She also has recorded 54 blocks on the season for an average of 1.9 per game.

She has recorded 38 blocks over the past 15 games and has four career double-doubles.

STEADY PERFORMER

Although she doesn't produce the eye-catching stats, senior point guard **LaReahn Washington** has been one of the most valuable players on the team since joining the program in 2010 with three rings to her credit.

The Houston native is one of PVAMU's best on-the-ball defenders and ranks second on the team with 56 steals. She ranks fourth in rebounding and is second with 79 assists.

She earned her first career SWAC Player of the Week Honor five weeks ago.

FROM DOWNTOWN

The Lady Panthers rank fourth in the SWAC in three-point field goal percentage as they're shooting 29 percent from beyond the arc at this point.

Jeanette Jackson leads the team and ranks fourth in the SWAC with 32 percent shooting from three-point range.

ROAD WARRIORS

The Lady Panthers have been on the road throughout the season with only 10 home games under their belt compared to 20 road games.

In non-conference play, the Lady Panthers have played in a total of four states as they've logged trips to Florida, Michigan and New York in addition to traveling in Texas.

DIVERSITY

Head coach **Dawn Brown** leaves no stone unturned in the recruiting process as six states are represented on this year's roster.

Brown has four players from Texas, two each from Georgia and Florida and one each from Nevada, Mississippi and California.

2013-2014 LADY PANTHER BASKETBALL GAME NOTES

TAKING ADVANTAGE OF CHARITY

Free throw shooting has been a strong suit for the Prairie View A&M Lady Panthers as they lead the SWAC with a 70 percent average (523-of-747).

Junior point guard **Jeanette Jackson** is the top performer with a 78 percent average followed by senior point guard **LaReahn Washington's** 71 percent clip. **Gabrielle Scott** (37-of-41) has a 90 percent average but does not have enough attempts to qualify amongst the SWAC leaders.

UP NEXT

A win on Saturday advances Prairie View A&M to the NCAA Division I Women's Basketball Championship for the fourth straight year as they'll know its opponent and destination on Monday evening.

RADIO/INTERNET

All of Prairie View A&M's SWAC and home non-conference contests will be broadcasted live on KPVO 91.3 FM with **Leonard Moon** calling the action. The station can be heard via the airwaves or Internet at www.pvamu.edu/kpvu.

Smartphone and tablet users can also hear the game live by downloading the TuneIn application for their respective devices and selecting KPVO 91.3 FM.

Selected games will also be streamed via the OpenMicBroadcast Network (korradio.com) with **Mike Prince** calling the action.

PANTHERVISION

Prairie View A&M will begin its third year of streaming selected athletic events via its website at www.PVPANTHERS.com.

The video is available for a nominal fee through the PV website and fans have the option to purchase individual, season or yearly packages.

PRAIRIE VIEW BY THE NUMBERS

6 - Prairie View has players from six states on the 2013-14 roster.

1 - Head Coach **Dawn Brown** begins her first season as PVAMU's interim head coach. After a 20-year stint by former head coach **Bob Atkins**, PVAMU has had three coaches in the past nine years.

7 - Prairie View A&M has had seven postseason appearances in program history. The Lady Panthers have competed in the NCAA Tournament five times and twice in the NIT.

3 - Prairie View has had only three, 20-win seasons since 1982. Former head coaches **Cynthia Cooper-Dyke** (2) and **Toyelle Wilson** (1) eclipsed the 20-win mark.

DID YOU KNOW?

●●● Prairie View A&M University is the second-oldest public institution of higher education in Texas, second only to Texas A&M University.

●●● Prairie View A&M University has produced more African-American three-star generals than any other higher education institution in the country.

●●● Prairie View A&M University is the only charter member remaining in the Southwestern Athletic Conference.

●●● In the College of Engineering, PVAMU students developed the first solar-powered car ever built and raced by an HBCU.

●●● Prairie View A&M has had its name changed seven times.

GAME-BY-GAME STARTERS

11-8	RICE	Jackson	L. Scott	Hampton-Finch	Parker	Burton
11-13	@ Texas A&M	Jackson	L. Scott	Hampton-Finch	Parker	Burton
11-17	@ Florida State	Jackson	L. Scott	Hampton-Finch	Parker	Washington
11-30	vs. Stephen F. Austin	Jackson	L. Scott	G. Scott	Burton	Washington
12-1	@ Houston	Jackson	L. Scott	Hampton-Finch	Washington	G. Scott
12-6	@ Florida International	Jackson	L. Scott	Hampton-Finch	Parker	Washington
12-14	vs. James Madison	Jackson	L. Scott	Hampton-Finch	G. Scott	Washington
12-15	vs. Drexel	Jackson	L. Scott	Hampton-Finch	G. Scott	Washington
12-18	@ Central Michigan	Jackson	L. Scott	Hampton-Finch	G. Scott	Washington
12-28	@ TCU	Jackson	L. Scott	Hampton-Finch	G. Scott	Washington
1-4	SOUTHERN*	Jackson	L. Scott	Hampton-Finch	G. Scott	Washington
1-6	ALCORN STATE*	Jackson	L. Scott	Hampton-Finch	G. Scott	Washington
1-11	@ Texas Southern*	Jackson	L. Scott	Hampton-Finch	G. Scott	Washington
1-18	@ Jackson State*	Jackson	Brooks	Hampton-Finch	G. Scott	Washington
1-20	@ Grambling State*	Jackson	Brooks	Hampton-Finch	G. Scott	Washington
1-25	ARKANSAS-PINE BLUFF*	Jackson	Brooks	Hampton-Finch	G. Scott	Washington
1-27	MISSISSIPPI VALLEY STATE*	Jackson	Brooks	Hampton-Finch	G. Scott	Washington
2-1	@ Alabama State*	Jackson	Brooks	Hampton-Finch	G. Scott	Washington
2-3	@ Alabama A&M*	Jackson	Brooks	Hampton-Finch	G. Scott	Washington
2-8	TEXAS SOUTHERN*	Jackson	Brooks	Hampton-Finch	G. Scott	Washington
2-15	JACKSON STATE*	Jackson	Brooks	Hampton-Finch	G. Scott	Washington
2-17	GRAMBLING STATE*	Jackson	Brooks	Hampton-Finch	G. Scott	Washington
2-22	@ Arkansas-Pine Bluff*	Jackson	Brooks	Hampton-Finch	G. Scott	Washington
2-24	@ Mississippi Valley State*	Jackson	Brooks	Hampton-Finch	G. Scott	Washington
3-1	ALABAMA A&M*	Jackson	Parker	Hampton-Finch	G. Scott	Washington
3-3	ALABAMA STATE*	Jackson	Parker	Hampton-Finch	G. Scott	Washington
3-6	@ Southern*	Jackson	Parker	Hampton-Finch	G. Scott	Washington
3-8	@ Alcorn State*	Jackson	Parker	Hampton-Finch	G. Scott	Washington
3-13	vs. Alabama State*	Jackson	Parker	Hampton-Finch	G. Scott	Washington
3-14	vs. Southern	Jackson	Parker	Hampton-Finch	G. Scott	Washington

2013-2014 LADY PANTHER BASKETBALL GAME NOTES

GAME-BY-GAME RECAPS

GAME 1

Rice 77

Prairie View A&M 63

Fri., Nov. 8, 2013

She was challenged to take a leadership role on the team – to become a pillar of stability vocally on the court and to inspire with her gameplay. Junior point guard **Jeanette Jackson** rose to the occasion in a 77-63 loss to Rice on Friday night in the home-opener at the William Nicks Building.

Jackson started the season by scoring a career-high 32 points and surpassing her previous high of 29 points against Arkansas Pine-Bluff in the 2012 season.

The three-year starter at point guard plans to continue to lead her team by example, and she also is excited about the addition of the new players to the team.

Prairie View A&M coach **Dawn Brown** was the one who challenged Jackson to take become a better player for the sake of the team, and she made her debut as the interim head coach of the Lady Panthers basketball team on Friday night.

Rice center **Jessica Kuster** put up 33 points, 15 rebounds and four assists as she led the Owls to victory.

GAME 2

Texas A&M 76

Prairie View A&M 27

Wed., Nov. 13, 2013

The Prairie View A&M women's basketball team fell victim to No. 16 ranked Texas A&M and an aggressive defense in a 76-27 loss in Reed Arena on Wednesday night.

The Lady Panthers defense held strong through the first four minutes of the contest, trailing 4-3 with 15:49 remaining in the first half following an **Alexus Parker** three. However, Texas A&M followed that score with a 34-to-6 run close out the half with a 38-10 lead. The Lady Panthers were plagued by turnovers, committing 30 on the night.

Prairie View A&M guard **LaReahn Washington** came off of the bench to score four points and lead all Prairie View A&M scorers in the first half on 2-for-2 shooting from the field. She finished the game with a team-high eight points on 3-for-5 shooting from the floor, finishing as the only player to shoot over 50 percent. Redshirt sophomore **Gabrielle Scott** followed up with seven points and one three-pointer to her name. Prairie View A&M's reserve guards combined for 15 bench points.

Junior point guard **Jeanette Jackson**, who led

the Lady Panthers with 32 points in their season-THE opener against Rice on Nov. 8 at home, was held to 1 point on 0-for-14 shooting from the field before fouling out with 2:00 remaining. Prairie View A&M shot 19.6 percent from the field as a team. Despite the low shooting percentage, the Lady Panthers actually held a slight rebounding advantage four minutes into the second half.

GAME 3

Florida State 88

Prairie View A&M 37

Sunday, Nov. 17, 2013

The performance by sophomore center **Shamiya Brooks** off of the bench was a bright spot for the Prairie View A&M women's basketball team in an 88-37 loss to Florida State on Sunday afternoon.

She provided valuable minutes, scoring six points and grabbed a team-high of seven rebounds in the Lady Panthers third-consecutive loss of the season. Brooks' spark off of the bench complemented **Larissa Scott's** seven points and four rebounds in the post.

Brooks and Scott both shot at least 60 percent from the field, but they could not offset the amount of turnovers given up. Prairie View A&M guards accounted for 23 of the team's 28 turnovers, including a combined 16 turnovers between starters **Jeanette Jackson** and **LaReahn Washington**.

The Lady Panthers bounced back from scoring just 10 points in the first half and shooting 16 percent to put together a 27-point second half performance while shooting 26 percent from the floor. Brooks was a big part of that, picking up six points, six rebounds and two block in 14 minutes.

Florida State had six players score in the double figures, led by freshman guard **Brittany Brown's** 24 points.

GAME 4

Stephen F. Austin 76

Prairie View A&M 70

Sat., Nov. 30, 2013

Despite winning the turnover battle and getting a 22-point performance from junior point guard **Jeanette Jackson**, Prairie View A&M could not take down Stephen F. Austin in a 76-70 loss on Saturday in the opening game of the David Jones Memorial Classic at Hofheinz Pavilion.

Trailing 70-60 with a little over a minute left to play Prairie View A&M went on a 5-1 run and pulled to within six points with 50 seconds remaining following a layup through contact by **Larissa Scott**. Following one made free throw by SFA, redshirt sophomore guard **Gabrielle Scott** drained a three to cut her

team's deficit to 72-68. However, the Lady Jacks managed to hold on to that lead despite a gutsy performance by Prairie View A&M.

Prairie View A&M fought from behind for most of the second half, but the Lady Panthers remained within striking distance. **Asha Hampton-Finch** took a pass from **Larissa Scott** and put it in the basket with 8:10 remaining to cut Stephen F. Austin's lead to 52-46. Hampton-Finch fouled out with 7:28 remaining with four points and four rebounds to her name. **Larissa Scott** finished with a nine points and a team-high of seven rebounds.

The Lady Panthers trailed 30-28 following a Jackson three in the first half, but the Lady Jacks went on a 12-6 run close out the half and go into the locker room with a 42-34 lead. Prairie View A&M scored four unanswered points out of the gates in the second half to cut its deficit to 42-38 following a **Shamiya Brooks'** layup.

Shaneece Stephens provided a spark off of the bench, hitting a three with 11 minutes left in the first half to give Prairie View A&M an 18-15 lead. Stephens scored nine first-half points for coach Brown off of the bench and finished the game at that mark too.

Trailing 9-6, in the first half, the Lady Panthers embarked on a 7-2 run that was capped off by a **Jeanette Jackson** three-point shot with 12:30 remaining to tie the game at 13-13. That shot snapped an 0-for-11 three-point shooting slump by Jackson since she lit up Rice with nine points from downtown in the season-opener. Jackson went from being ice cold to on fire from downtown. She went 5-for-6 from three-point range to hitting five three-pointers in the first half. Jackson tallied a game-high 22 points to complement four assists and four steals.

2013-2014 LADY PANTHER BASKETBALL GAME NOTES

GAME-BY-GAME RECAPS

GAME 5

Houston 66
Prairie View A&M 60
Sun., Dec. 1, 2013

The Lady Panthers played like two different teams in a 74-46 loss to Houston on Sunday in Hofheinz Pavilion. The Prairie View A&M women's basketball team traded blows with their American Athletic Conference opponent in the first half but failed to match the Cougars' intensity in the second half en route to the defeat.

Junior forward **Asha Hampton-Finch** scored 12 of her career-high 19 points in the first half, but her output was not enough to take down the Cougars. Houston scored 12 unanswered points to begin the second half and stretched a Lady Panthers 31-25, six-point deficit to a 18 points as Prairie View A&M went on a six-minute scoring drought to start the second half before senior guard **LaReahn Washington** forced a steal and converted a fast break layup to put the score at 43-27 with 15:53 left in the second half.

Houston stretched its lead to as much as 23 points in the second half.

Washington and junior point guard **Jeanette Jackson** struggled with foul trouble, each paying with four fouls early in the second half. Brown said this changed their approaches to the game and led to struggles offensively as well as defensively.

It was a completely different story for the Lady Panthers and their playing style in the first 20 minutes. Trailing 10-2 early in the first half, Prairie View A&M turned to Hampton-Finch to go on an 8-3 run, which was capped off by a turnaround jumper by Finch to cut her team's deficit to 13-10 with 12:50 remaining in the first half. However, Houston countered with an 8-2 run of its own and eventually stretched its lead to nine points at 21-12 with a **Destini Texada** jumper with 9:58 left in the first.

The Lady Panthers pulled to within three points at 21-18 after **Larissa Scott** dropped in a put-back layup off of a **Jeanette Jackson** miss with 7:49 to go in the first half. Prairie View A&M turned to its post players for offensive and defensive production in the first half. Hampton-Finch scored a team-high 12 points in the first half, scoring eight of those points on a perfect shooting percentage from the free-throw line. She also added two first half steals. She finished with 19 points and five rebounds.

Larissa Scott had four rebounds, four points and one block in 16 minutes for coach **Dawn Brown** in the first half and finished with six points

and a team-high seven rebounds. The Lady Panthers remained within striking distance and went into the locker room down 31-25.

Prairie View A&M forced 12 first half turnovers, but it was drastically out-rebounded 25-to-11 by the Cougars. Houston's **Yasmeen Thompson** remained a threat against the Lady Panthers, she accrued nine points and 10 rebounds in the first half.

GAME 6

Florida International 77
Prairie View A&M 52
Fri., Dec. 6, 2013

The Prairie View A&M women's basketball team lost the turnover and the free throw battle in a 77-52 loss to FIU on Friday night, suffering a defeat despite receiving a double-digit scoring game from junior point guard **Jeanette Jackson**.

Jackson led Prairie View A&M with 19 points and added three assists, five steals and four rebounds. PVAMU, however, committed 19 turnovers and shot 31 percent from the foul line in the loss.

Senior guard **LaReahn Washington** and junior forward **Larissa Scott** each added nine points for Prairie View A&M; Scott recorded a season-high of four blocks. Scott picked up five rebounds and five blocks in the second half as her team tried to fight back from an early deficit.

FIU extended a 33-21 halftime lead by starting the second half off on a 9-2 run to take a 42-23 lead. FIU went up by as much as 30 points in the second half as Prairie View A&M struggled to score in the second half.

Prairie View A&M fell victim to self-inflicted wounds in the first half, committing 13 turnovers in 20 minutes as FIU managed to pull ahead riding the hot scoring hand of **Jerica Coley**. She had 15 at the half, while **Jeanette Jackson** led the way for Prairie View A&M with seven points on 3-for-8 shooting. Coley finished with 25 points.

Reserve guard **Shaneece Stephens** came off of the bench and nailed two-consecutive shots from the field to give Prairie View A&M a 15-12 lead in the first half. However, FIU countered with a 7-2 run, which was highlighted off by a **Kamika Idom** three with 8:23 remaining. FIU's Coley extended the run, scoring 7-of-11 points for her team in what turned out to be a 21-3 run as FIU stretched its lead to 33-19. **Asha Hampton-Finch** put an end to the run with a jump hook with 1:31 remaining in the first half to cut her team's deficit to 33-21.

Stephens finished with six points and one rebound to lead all bench scorers.

GAME 7

James Madison 79
Prairie View A&M 50
Sat., Dec. 14, 2013

Prairie A&M could not recover from excessive turnovers and poor free-throw shooting in a 79-50 loss to James Madison in the St. John's Chartwell's Holiday Classic despite a 20-point performance by junior point guard **Jeanette Jackson** on Saturday.

Junior forward **Larissa Scott** nearly put up a double-double with nine points and eight rebounds, but 21 team turnovers and 61 percent shooting from the foul line as a team came back to hurt the Lady Panthers. James Madison finished with 30 points off of turnovers and won the rebound battle with 16 second chance points.

James Madison jumped out to a 20-6 lead out of the gates in the first half until Jackson drained a three off of a curl to with 12:13 left to cut her team's deficit to 11 points. Prairie View A&M suffered from frequent and sometimes unforced turnovers in the first half, compiling seven turnovers in the first eight minutes as James Madison took the early lead and continued to pile it on. The Lady Panthers trailed by as much as 28 points in the first half and went into the locker room at the half down 46-23.

Jackson scored a game-high 20 points, while redshirt sophomore guard **Gabrielle Scott** provided seven points and three rebounds. It was the fourth time this season that Jackson was the team-leader in points. It was also the fourth time this season that Jackson scored 19 points or more in a contest. **Larissa Scott** also contributed with nine points and nine rebounds.

2013-2014 LADY PANTHER BASKETBALL GAME NOTES

GAME-BY-GAME RECAPS

GAME 8

Drexel 53

Prairie View A&M 45

Sun., Dec. 15, 2013

The Lady Panthers showed flashes of greatness during a second-half comeback attempt, but their early deficit was too large to recover from as they suffered a 53-45 loss to Drexel in their final game of the St. John's Chartwell's Classic.

The Lady Panthers, under the direction of coach **Dawn Brown**, outscored Drexel 27-22 in the second half and won the turnover battle too in the final 20 minutes. The Dragons had 10 turnovers, while Prairie View A&M committed four as junior point guard **Jeanette Jackson** and company took better care of the ball.

Trailing 31-18 after 20 minutes, Prairie View A&M came out of the second half fighting to get back in the game, holding Drexel scoreless for the first two minutes as Jackson drained a three with 17:40 remaining to pull the game back within reach at 10 points. She then made two free throws to cut her team's deficit to 31-23. Prairie View A&M received a big boost from a **LaReahn Washington** three with 15:56 left to cut Drexel's lead to 33-26. That was a part of a 8-2 run to start off the second half.

Drexel, however, managed to counter the run and extend its lead to double digits. The Dragons held off the Lady Panthers attack as Prairie View A&M suffered through a five-minute scoreless streak that dealt a blow to its plans of taking out the defending WNIT champions.

Jackson finished with a game-high 23 points, four assists and two rebounds, while redshirt sophomore guard **Gabrielle Scott** provided 7 points (all in the first half), five rebounds and three assists to finish as the Lady Panthers' second-leading scorer.

The Lady Panthers relied heavily on the play of their guards in the first half, looking to get **Gabrielle Scott** involved in the offense early. **Gabrielle Scott** led the team with eight field goal attempts at the half, going 3-for-8 from the field with seven points to lead the team. Jackson provided five points and three assist for Prairie View A&M as she tried to keep her team in the game.

Drexel started the contest off shooting 80 percent from the field, including 4-of-6 from downtown to jump out on the Lady Panthers by 14 points at 21-7 before Jackson hit a three-pointer with 11:39 remaining to cut her team's deficit to 11 points.

Jackson averaged 21.5 points and four assists

during the St. John's Chartwell's Holiday Classic and was named to the All-Tournament Team. She looks to lead Prairie View A&M to its first victory vs. Central Michigan at noon on Wednesday in Mt. Pleasant, Mich.

GAME 9

Central Michigan 90

Prairie View A&M 66

Sun., Dec. 15, 2013

Prairie View A&M played its best first half of basketball of the season against Central Michigan, scoring a season-high 36 points in the first 20 minutes, but a cold start to the second half hurt the Lady Panthers in a 90-66 loss at McGuirk Arena.

Reigning Southwestern Athletic Conference Player Of The Week **Jeanette Jackson** came through with her third-consecutive 20-point game as she led the Lady Panthers with 20 points, six assists, six rebounds and just one turnover. Prairie View A&M coach **Dawn Brown** said she wanted to see other players contribute offensively, and she got it with junior center **Larissa Scott** and redshirt sophomore **Gabrielle Scott**.

Larissa Scott turned in her first double-double of the season and her first game with 10 or more points as she stacked 12 points, 12 rebounds and four steals. **Gabrielle Scott** came through with 14 points and five rebounds, also her season-high in scoring. Central Michigan, however, had five players with double figures and outscored the Lady Panthers in bench points 24-to-14. Despite the loss it was Prairie View A&M's first game with two or more players to score in double figures.

Central Michigan started the second half off by going on a 19-2 run that lasted approximately four minutes to take a 59-38 lead, its largest lead since the beginning of the first half. The Lady Panthers went cold from the field and shot themselves in the foot with unforced turnovers while the Chippewas got hot from three-point range, until Jackson drained a three with 15:04 remaining to cut Central Michigan's lead to 59-41. However, the Chippewas gained back and maintained their 20-point cushion for the remainder of the second half. Prairie View A&M did hold the Chippewas to two points in the final five minutes of regulation as they clamped down defensively.

Central Michigan jumped out to an early 17-6 lead, but Prairie View A&M scored four-consecutive points off of turnovers to pull to within seven points at 17-10 thanks to a fast break layup by **Gabrielle Scott** and a shot by **Alexus Parker**. **Gabrielle Scott** capped off a 9-0 run with a three off of an assist from **Jeanette Jackson** with 10:40 remaining to put the score at 17-15 with the Lady Panthers trailing.

The Lady Panthers continued fight from that

point, and pulled to within three at 31-28 when Jackson made one-of-two free throw shots with 5:43 left in the first half. Larissa Scott then made the first of two free throw attempts with 4:50 remaining to pull to within 31-29. **Gabrielle Scott** hit a clutch pull up jumper off of penetration to tie the game at 31 with 3:04 left in the first half.

Scott led the Lady Panthers with 12 first-half points, scoring in the double figures for the first time this season. Jackson kept the pace with her season average, with nine points and five assists in the first half. Jackson surpassed her season high in assists in the first 20 minutes by dropping five dimes. What was more impressive, Jackson took care of the ball with zero turnovers (Lowest turnover total for a half this season).

The Lady Panthers have 10 days to recuperate before heading to Fort Worth to take on Texas Christian in their final non-conference match of the season at 7 p.m. on Dec. 28.

GAME 10

TCU 76

Prairie View A&M 47

Sat., Dec. 28, 2013

Prairie View A&M could not overcome a hot start by Texas Christian and dropped a 76-47 game to the Horned Frogs in Daniel-Meyer Coliseum.

Larissa Scott came through as the Lady Panthers leading scorer and top rebounder with 12 points and 11 boards to record her second-consecutive double-double. Scott had four double-doubles all of last season. **Jeanette Jackson** provided 11 points and four assist and two steals. Jackson's 11-point performance proved to be the fifth-consecutive double-digit scoring game.

Prairie View A&M got a six-point halftime performance by freshman guard **Alexus Parker**. She was 2-for-4 from three point range as the Lady Panthers tried to stay within range of the Horned Frogs. Parker finished with seven points and three rebounds.

TCU jumped out to an early lead on Prairie View A&M out of the gates and held off the Lady Panthers before entering the locker room at the half trailing 39-19. The Horned Frogs started the second half off on a 13-3 run to extend its lead 52-22 lead. The Lady Panthers were held off for the remainder of the game as they tried to find their stride offensively.

2013-2014 LADY PANTHER BASKETBALL GAME NOTES

GAME-BY-GAME RECAPS

GAME 11

Southern 88

Prairie View A&M 74

Sat., Jan. 4, 2014

A 25-point performance by junior point guard **Jeanette Jackson** and a double-double by junior forward **Larissa Scott** was not enough for Prairie View A&M to overcome Southern in an 88-74 loss at home Saturday in the William Nicks Building.

Jackson finished one rebound shy of her first career double-double, and Scott collected her third-consecutive double with 15 points and 14 rebounds to complement three blocks, but their efforts were overshadowed by **Jasmine Jefferson** (22 points and 16 rebounds), **Adrian Sanders** (21 points and three steals) and a Southern offense that shot 48 percent from the floor in the second half.

The Lady Panthers entered the locker room at halftime trailing 39-38, eyeing the lead and a win to start off Southwestern Athletic Conference play. A Jackson converted jumper with 12:51 remaining gave the Lady Panthers a 55-54 lead. There were five lead changes from that point until Southern took the lead for good off of Coleman layup with 9:54 remaining to go up 62-61.

Southern (4-5, 1-0 SWAC) held the Lady Panthers at bay, and won the game in the trenches with 42 points in the paint compared to 17 by the Prairie View A&M offense. The Lady Panthers held **Kendra Coleman**, Southern's leading scorer at 19.1 points per game to 12 points and just three assists. Meanwhile Prairie View A&M freshman forward **Alexus Parker** scored a career-high 10 points.

GAME 12

Prairie View A&M 74

Alcorn State

Mon., Jan. 6, 2014

The Prairie View A&M Lady Panthers turned in their most balanced offensive performance of the season, leading to 71-68 win over Alcorn State on Monday night to improve to 1-1 in Southwestern Athletic Conference play.

The Lady Panthers had four players score in double figures for the first time this season and more importantly iced the game thanks to clutch free throw shooting in the final 13 seconds as interim head coach **Dawn Brown** picked up her first career win.

Trailing for the first nine minutes of the second half, Prairie View A&M turned to its role players to go on a 15-0 run to take control of the game. Freshman forward **Alexus Parker** started the party with a layup at 11:49 to give cut Alcorn State's lead to 46-41.

About two minutes later redshirt sophomore guard **Gabrielle Scott** drained a three with 10:18 remaining to give the Lady Panthers their first lead of the second half at 48-46. Then following two huge layups by sophomore center **Shamiya Brooks**, **Gabrielle Scott** capped the run off with two free throws to give Prairie View A&M a 54-46 lead.

The Lady Panthers held their ground with a bend but don't break strategy, and they did not surrender their lead in the second half. Alcorn State gave the Prairie View A&M a scare with 13 seconds remaining when reserve center **Ather Cep** saw her first playing time of the game and threw up a prayer of a three. It dropped to tie the game at 68-68. Prairie View A&M, however, pulled away thanks to free throws and a clutch steal by senior guard **LaReahn Washington**.

Junior point guard **Jeanette Jackson** was not the leading scorer for the Lady Panthers for just the fourth time this season, but her 15 points and season-high nine assists were critical in Prairie View A&M's win. **Gabrielle Scott** led the way with 16 points on 4-of-5 shooting from three-point territory for a team-high. Meanwhile, junior center **Larissa Scott** amassed her fourth-consecutive double-double with 15 points and 13 rebounds.

Larissa Scott got much-needed help in the post in the form of Brooks, who scored a career-high 11 points to complement five rebounds and three momentum-shifting blocks.

GAME 13

Texas Southern 63

Prairie View A&M 59

Sat., Jan. 11, 2014

Despite a 30-point outing from junior guard **Jeanette Jackson**, Texas Southern overcame a five-point deficit in the final 3:35 of the second half as they snatched away a 63-59 victory from Prairie View A&M on Saturday evening in the H&PE Arena.

Playing their SWAC rival for the first time since last year's 2013 SWAC Tournament, the Lady Panthers fought back from a pair of two-possession deficits to open the second half. Tied at 25-all to open the half, TSU claimed a 36-30 lead at the 14:17 mark and a 37-32 advantage three minutes later before Jackson nailed a trey to draw within 37-35 with 11:38 remaining. On the ensuing possession, Jackson picked the pockets of TSU's **Sarah Williams** and moved the Lady Panthers on top 40-39 with 10:27 on the clock.

TSU's **Jazzmin Parker** hit 1-of-3 free throws to record the sixth tie of the contest and back-to-back turnovers by the Lady Panthers didn't help the cause as TSU went ahead by two following **Morgan Simmons'** basket. Despite the setback, the Lady Panthers overcame their troubles as the 1-2 punch of **Larissa Scott** and Jackson combined to score nine points

during a 9-1 run for a 49-43 advantage.

With the lead in their hands, the Lady Panthers fought off several rugged attempts by TSU over the next few minutes but they managed to hold on as they claimed a 56-51 margin with 3:35 following Scott's free throws.

However, the tide of the game changed over the final 3:35 as a Williams' layup drew TSU to within 56-53 on the ensuing possession. In a matter of minutes, the shots stopped falling for the Lady Panthers as they missed three straight shots while TSU closed to within one at 56-55 on **Ashley Ferguson's** layup at the 2:06 mark.

Prairie View A&M committed a key turnover on its next possession and was whistled for a foul as Ferguson was driving to the basket. Ferguson hit both free throws to reclaim a 57-56 lead and on the following possession, Jackson's three-pointer rimmed out and a PVAMU foul sent TSU back to the free throw line. TSU went on top 59-56 after connecting on its two free throws and Prairie View A&M's game-tying three-point attempt by freshman **Alexus Parker** fell short. Subsequently, TSU's **Kiana Ingram** was fouled on the next play down the court and hit 1-of-2 from the charity stripe to increase PVAMU's deficit to 60-56 with 29 ticks remaining on the scoreboard.

The Lady Panthers suffered another untimely turnover which led to two more TSU free throws and a 62-56 deficit seven seconds later. Down by two possessions, senior guard **LaReahn Washington** recorded a critical three-point play and closed the gap to 62-59 at the 14 second mark. The Lady Panthers were forced to foul in order to preserve time but TSU's **Sarah Williams** hit 1-of-2 free throws for the two-possession lead which ultimately sealed the contest.

Jackson finished two points shy of her career high with a 30-point outing and three steals. Scott picked up her fifth consecutive double-double with 13 points and 11 rebounds. **Asha Hampton-Finch** also set a career-high with 11 rebounds in 32 minutes of action.

2013-2014 LADY PANTHER BASKETBALL GAME NOTES

GAME-BY-GAME RECAPS

GAME 14

Jackson State 83

Prairie View A&M 82 (20T)

Sat., Jan. 18, 2014

Jackson State University defeated Prairie View A&M University, 83-82 in double overtime Saturday afternoon at the Lee E. Williams Athletic & Assembly Center.

With the win, JSU improved to 6-9 overall and 4-1 in SWAC competition.

Ekwara Ndongo led the Lady Tigers with 18 points while **Alisa Ross** registered 17. **Ayanna Hardy-Fuller** recorded her third double-double of the season, scoring 15 points and eleven boards. **Dominique Brothern** added 12 points to round out the double-digit scoring for the Lady Tigers.

At the half, JSU trailed 26-22. JSU's Alisa Ross knocked down a three-pointer at the end of regulation to tie the game at 64-64. PVAMU's **Jeanette Jackson** scored a jumper to take the game into the second overtime at 72-72. With just six seconds left to play in the final period, Hardy-Fuller posted a shot from the line to help JSU earn the win.

The Lady Tigers finished the game shooting 33 percent from the field, 40 percent from three-point range, and 70 percent from the line.

JSU led PVAMU, 18-17 in second chance points and points off turnovers, 6-2.

Alexus Parker paced the Lady Panthers with 21 points while Jackson added 18 points and **Shamiya Brooks** registered a double-double, scoring 10 points and 11 rebounds.

GAME 15

Prairie View A&M 71

Grambling State 62

Sat., Jan. 20, 2014

Prairie View A&M University picked up its second consecutive league win defeating Grambling State 72-61 Monday night inside the Hobby Athletic Center.

Jeanette Jackson had 29 points with a game high five steals, three assists and two block shots to lead PVAMU (2-13,2-3) while **Gabrielle Scott** scored 10.

PVAMU shot 41 percent from the field and went 11-of-13 (84 percent) from the free throw line. The Lady Panthers took a 36-27 lead at the half.

In the final minutes of the contest, Jackson hit a layup to spark an 8-0 run to bring the score to 70-60. With only 34 seconds left on the clock, Jackson scored the final two points of the game to push the Lady Panthers to the win.

GSU (6-11, 3-3) was held to 21-of-63, shooting

(33 percent) overall and committed 21 turnovers.

Victoya Ricks came off the bench scoring a team best 17 points to lead the Lady Tigers. **Jasmine Godboldt** recorded her first double-double on the year with 10 points and 10 rebounds. **Joanna Miller** finished as the third Lady Tiger in double digits with 16 points. Miller shot perfectly from the line while adding six rebounds and two steals in the match.

GAME 16

Prairie View A&M 75

Arkansas-Pine Bluff 62

Sat., Jan. 27, 2014

In Prairie View A&M's 75-62 win over Arkansas-Pine Bluff on Saturday, PVAMU's **LaReahn Washington** recorded her first double-double of the year during the SWAC match up at the William Nicks Building.

Washington nearly notched a triple double for PVAM (3-13,3-3), scoring 13 points with 10 rebounds and seven assists. **Jeanette Jackson** led all scorers with 21 points. Jackson shot 5-of-6 from the free throw line, adding four three's in the win. **Asha Hampton-Finch** posted 12 points while **Gabrielle Scott** and **Shamiya Brooks** each added 10 points apiece.

Christina Lasane led UAPB (1-15,0-6) with 21 points. **Charisse Carr** scored a season high 16 points in the loss while **Mollie Campbell** added a team high six rebounds for the Lady Lions.

The Lady Panthers shot 43 percent in the first half in racing to a 36-32 lead at the break. With 12:43 left on the clock, a lay up by UAPB's **Destiny Ham** tied the game 45-all. PVAMU's **Shamiya Brooks** responded with a layup to put the Lady Panthers back on top.

The Lady Lions went 23-28 from the free throw line, shooting 82 percent overall while the Lady Panthers shot 15-of-20 (75 percent).

GAME 17

Prairie View A&M 77

Mississippi Valley State 59

Mon., Jan. 29, 2014

The Prairie View A&M women's basketball team continued its winning ways on Monday evening as **LaReahn Washington** and **Gabrielle Scott** combined to score 47 points as they held off Mississippi Valley State 77-59 inside the William Nicks Building on Monday evening.

Prairie View A&M blasted out of the gates to open the game with a 10-point lead (16-6) at the 12:34 mark. The Devilettes trimmed their deficit to 20-14 five minutes later but Prairie View A&M turned on the jets with an 11-2 run as Washington was a one-

woman wrecking crew with six points and a steal during that span. A pair of turnovers by the Lady Panthers allowed MVSU to creep back in as the lead dropped to nine but once again, the Lady Panthers hit the gas pedal with a 14-2 surge to close out the half as **Alexus Parker** and Washington combined to score 11 points.

Ahead by 21 to open the second half, the contest took an odd turn as Mississippi Valley opened the half with two consecutive treys and a pair of free throws to close within 13 less than 1:25 in. Washington stopped the bleeding with a timely three-pointer at the 18:01 mark but the Devilettes kept charging as MVSU's **Ashanti' Weathers** nailed two consecutive treys to draw within 50-41 right before the first media timeout. Sophomore **Shamiya Brooks** took over from that point with a three-point play after Valley's trey followed by another layup several minutes later to keep MVSU at bay. MVSU's Weathers answered with a basket to cut its deficit to single digits but Washington and PVAMU's **Gabrielle Scott** combined to score the next five points to up the lead back to 60-46.

A costly technical foul by the Lady Panthers with 6:56 remaining allowed MVSU to sneak back into the contest as the lead fell to eight at 60-52. After a series of missed baskets by both teams, junior point guard **Jeanette Jackson** hit a big three-pointer with 5:06 on the clock but PVAMU's double digit lead once again vanished as MVSU's **Jasmyne Sanders** answered with a bucket to draw them within 63-54 with 4:39 left.

On the ensuing possession, Gabrielle Scott took a pass from Washington and drained a trey to send the lead back into double digits. MVSU misfired on its next possession and Scott sent the Devilettes home packing as the Vanleave, Miss. native scored seven points over the final 2:49 as PVAMU ended the game on an 11-5 crowd pleasing run.

Washington had her best game as a Lady Panther with a career-high 24 points, seven assists and three steals. Scott followed with 23 points while Brooks completed the double-double with 13 points, 12 rebounds and four blocks. Even though her double-digit scoring streak came to an end, Jackson finished with eight points, seven assists and four steals.

2013-2014 LADY PANTHER BASKETBALL GAME NOTES

GAME-BY-GAME RECAPS

GAME 18

Prairie View A&M 58

Alabama State 47

Sat., Feb. 1, 2014

Prairie View A&M picked up a 58-47 league win over Alabama State Saturday afternoon at the Dunn Oliver Acadome.

PVAMU (5-13,5-3) went on a 10-0 run to take a quick lead within the first five minutes of the match. Alexis Parker had eight points as the Lady Panthers raced out to a 28-20 point halftime lead and led by double digits throughout the second half.

Jeanette Jackson joined Parker to lead the Lady Panthers in scoring, posting 16 points apiece. Both went 4-4 from the line while PVAMU shot 91 percent from the charity stripe overall.

Jamesha Blake scored a team best 13 points and eight rebounds for ASU (9-10,2-6).

The Lady Hornets committed 15 turnovers and shot just 27 percent from the field, scoring only 17-of-61 attempts.

GAME 19

Prairie View A&M 68

Alabama A&M 60

Mon., Feb. 3, 2014

Shamiya Brooks scored a season high 19 points in Prairie View A&M's 69-60 conference win over Alabama A&M on Monday at the T.M. Elmore Gymnasium.

Brooks added a team best 11 rebounds to notch her first double-double on the season. She shot 9-of-13 from the field and tacked on one assists in the win. Jeanette Jackson and **LaReahn Washington** also finished in double figures for PVAMU (6-13,6-3). Jackson posted 18 points while Washington put up 15.

With the score tied 29-all at halftime, Brooks quickly put the Lady Panthers back on top scoring a layup within the first minute of the second half. Jackson added a pair of free throws in the final seconds of the game to give PVAM its second largest lead of the half and close out the game with a victory.

The Lady Panthers shot 13-of-18 from the free throw line in the second half, shooting 73 percent overall.

AAMU's (3-16,1-8) **Brittney Strickland** had 18 points for the Lady Bulldogs while **Jasmine Sanders** registered 15 points. Sanders tacked on a team high seven rebounds in the loss.

GAME 20

Texas Southern 74

Prairie View A&M 70

Sat., Feb. 8, 2014

Brianna Sidney's 29 points fueled Texas Southern University to a 74-70 victory over Prairie View A&M on Saturday at the William Nicks Building.

Sidney scored 19 first half points to carry TSU to a 33-31 halftime lead. She shot 9-of-18 from the field, 5-of-9 from behind the arc and 6-of-7 from the free-throw line for the game. **Jazzmin Parker** chipped 14 points to help lead the Lady Tigers while **Sarah Williams** and **Ashley Ferguson** added 10 points a piece.

TSU shot 47 percent from the field and 41 percent from three point range.

Sidney scored six straight points for a 32-26 lead with 4:21 left to play in the first half but PVAMU came charging back as **Jeanette Jackson** hit five consecutive points to draw within 32-31 with 1:19 on the clock. Williams nailed a basket 19 seconds later to send the Lady Tigers into the locker room ahead 33-31.

TSU led by as many as 13 points in the second half before PVAMU's (6-14,6-4) **Shamiya Brooks** scored a layup to bring the Lady Panthers within one, 71-70 with just 21 seconds left on the clock. Parker knocked down three free throws in the final seconds to help TSU take home the win.

PVAMU had three players finish the game in double digits. Jackson had a team high 27 points, shooting 8-of-19 from the field and 8-of-13 from the line while Brooks notched her fourth double-double on the season with 13 points and 13 rebounds. **LaReahn Washington** rounded out double figures for the Lady Panthers with 16 points.

GAME 21

Prairie View A&M 92

Jackson State 76

Sat., Feb. 15, 2014

Jeanette Jackson and **LaReahn Washington** combined to score 52 points as Prairie View A&M held off a second-half charge by Jackson State for a 92-76 win inside the William Nicks Building on Saturday afternoon.

The Lady Panthers wasted no time in setting the tone with a 13-2 lead in the first five minutes. Prairie View A&M terrorized JSU defensively with five turnovers during that span coupled with solid offensive production as **LaReahn Washington** and **Jeanette Jackson** combined for 12 points.

In a matter of seconds, JSU closed to within 13-7 as **Kameron Jones** nailed a jumper followed by an **Ayanna Lynn** three-point play after a turn-

over. However, PVAMU quickly responded as **Asha Hampton-Finch** hit a jumper followed by **Shamiya Brooks'** putback for a 17-7 advantage. Once again, JSU narrowed its gap to 22-16 several minutes later but the Lady Panthers pushed it back to double figures after Jackson's layup.

Prairie View A&M maintained a comfortable lead for most of the first half but JSU inched back and drew to within 41-32 with 3:50 left on **Kameron Jones'** jumper. From that point, the Lady Panthers turned on the jets and closed out the half on a 15-4 run as guard **Taylor Overshown** nailed a buzzer-beating trey with no time remaining for a 20-point (56-36) halftime advantage.

After an impressive first half, the wheels began to fall off PVAMU's cart on both ends of the court. Jackson State scored the first six points of the second half to draw within 12 while it took PVAMU six minutes to score as **LaReahn Washington** scored on a layup for the 14-point margin. Despite Washington's basket, JSU remained on the offensive as PVAMU's once-safe lead whittled down to seven (70-63) following a 25-7 second half run.

Two free throws by Washington upped PVAMU's lead to 72-63 with 8:52 left but JSU once again closed to within seven on Alisa Ross' layup at the 7:22 mark. With the momentum clearly in Jackson State's favor, the Lady Panthers turned to their floor leader in Jeanette Jackson for guidance and came up big as the Las Vegas, Nev. native scored five straight points over the next 50 seconds for a 76-65 advantage. After her baskets, the Lady Panthers came up big defensively with a block by **Shamiya Brooks** coupled with a JSU turnover which led to a three-point from Gabrielle Scott for a 79-65 lead.

Scott's basket was icing on the cake as PVAMU regained the lead and never looked back en route to splitting the season series with JSU and earning the tiebreaker by virtue of beating JSU by more than one point.

2013-2014 LADY PANTHER BASKETBALL GAME NOTES

GAME-BY-GAME RECAPS

GAME 22

Prairie View A&M 85 Grambling State 77 (20T) Mon., Feb. 17, 2014

A seemingly pedestrian contest turned into an intense and memorable battle down the stretch in the Baby Dome as Prairie View A&M edged Grambling State 85-77 in double overtime.

With 6:25 left in the first half, Prairie View A&M managed to break away from the Lady Tigers as they outscored them 12-6 over the next four minutes to lead 26-21 following **Jeanette Jackson's** trey. GSU drew to within 27-25 with 1:25 left but PVAMU reclaimed its five-point (30-25) margin at the half on **Alexus Parker's** trey at the 1:08 mark.

Prairie View A&M came out of the locker room full of energy and it appeared they were ready to run away with the game as they outscored GSU 10-4 within the first five minutes for a 40-29 advantage. The lead grew to as much as 12 (43-31) on **LaReahn Washington's** basket several minutes later but after the basket, the flow of the game came to a grind for the Lady Panthers.

The Lady Panthers suffered a scoring drought which lasted nearly eight minutes while GSU found its offense and outscored the Lady Panthers 15-2 as they claimed a 46-45 lead on **Joanna Miller's** jumper at the 4:01 mark. Both teams fought for the lead from that point but GSU took control with a 5-0 run late in the contest for a 51-49 lead with 26 seconds left.

With 10 seconds left in regulation, GSU was whistled for a foul which sent Washington to the line for a pair of free throws. Washington nailed both free throws to tie the game at 51-all but GSU regained the lead a second later as **Tyler Anderson** hit 1-of-2 free throws after being fouled. Six seconds later, GSU once again was whistled for a foul and **Jeanette Jackson** had a shot to reclaim the lead but hit 1-of-2 to knot the score at 52 apiece. GSU turned the ball over with a second left and **Larissa Scott's** half-court desperation shot nearly went in as the teams faced its first overtime.

PVAMU went up 57-54 with 3:28 remaining in the first overtime but GSU fought back and tied the contest at 57-all after connecting on three straight free throws over the next 40 seconds. Freshman guard **Alexus Parker** moved PVAMU back on top 58-57 with 2:17 left followed by a GSU turnover which led to a Larissa Scott steal and layup for a 60-57 lead.

GSU committed another turnover and PVAMU went for the knockout blow but came up short as two missed baskets led to GSU drawing within 60-59 on

Anderson's basket at the 1:18 mark. On the ensuing possession, Parker missed a three-pointer and GSU capitalized as they regained a 61-60 lead with 32 seconds left on **Victoya Ricks'** layup. Jackson answered Ricks' basket with 19 seconds remaining as she hit a driving layup for a 62-61 lead but with three seconds left, GSU hit the offensive glass and drew a foul which sent Ricks to the charity stripe. With a chance to reclaim the lead, Ricks hit 1-of-2 for the seventh tie of the game and the second overtime of the night.

The second overtime was a back-and-forth affair as both teams were tied at 70-all at the 1:44 mark. A jumper by Jackson gave PVAMU a 72-70 lead 12 seconds later and a much-needed spark as they picked up a big block and steal on GSU's next possession. With GSU forced to foul from that point to save time, the Lady Panthers shut the door for good from that point as they went 10-for-10 from the charity stripe en route to their 20th win in 21 tries over Grambling State.

Jackson overcame a sluggish offensive performance to finish with 22 points and four steals. Washington followed with 21 points, four steals and four assists while Larissa Scott added 11 points and nine rebounds off the bench along with 10 from Parker.

GAME 23

Prairie View A&M 80 Arkansas-Pine Bluff 67 Sat., Feb. 22, 2014

Four players scored in double figures as the Prairie View A&M women's basketball team ran past Arkansas-Pine Bluff 80-67 for their third straight win at the H.O. Clemmons Arena in Pine Bluff, Ark.

After a 2-0 lead in the first half by UAPB, the Lady Panthers took control as **Shamiya Brooks** tied it at 2-all and PVAMU never looked back as they led the rest of the way. Even though PVAMU maintained the lead, the contest was tight through the 14 minutes as every time PVAMU would threaten to pull away, UAPB found ways to cut the deficit to one.

UAPB's **Amber Haggie** nailed a trey to pull them within 21-19 with 6:28 remaining but Prairie View A&M finally blew the lid off as they outscored UAPB 13-0 to claim a 32-21 advantage at the 2:39 mark. Once again, UAPB closed to within single digits but PVAMU responded and upped it back to 13 as **Asha Hampton-Finch** hit two free throws followed by Jeanette Jackson's steal and layup with nine seconds left. UAPB would score a layup with four seconds left to close out the half with the Lady Panthers ahead 38-27.

Both Jackson and Brooks were a two-woman wrecking crew in the first half as Brooks scored 13 points with six rebounds while Jackson scored 11

points with three steals.

APB cut its deficit to seven early in the second stanza but PVAMU put away any hopes of a Lady Lion run as they outscored UAPB 26-8 over the next 10 minutes for a 64-39 lead. Late in the game, UAPB cut its deficit to 11 but PVAMU was never threatened as they completed the season sweep over UAPB.

Jackson led all scorers with 25 points, five steals and four assists. Brooks scored 16 points, grabbed eight rebounds and blocked three shots followed by 15 from **Alexus Parker** and 10 each from Hampton-Finch and **LaReahn Washington**.

With 25 points scored, Jackson is only six points shy of surpassing the 1,000-point mark in her three-year career at PVAMU.

GAME 24

Prairie View A&M 73 Mississippi Valley State 70 Mon., Feb. 24, 2014

Shamiya Brooks hit a pair of free throws with eight seconds remaining in Prairie View A&M University's 73-70 win over Mississippi Valley State on Monday at the Leflore County Civic Center.

Brooks tallied 11 points in the win as four other players tacked on double digits for PVAM (10-14,10-4). **Jeanette Jackson** led all scorers with 19 points, shooting 4-of-5 from the free throw line. **Alexus Parker** added 18, **LaReahn Washington** posted 12 and **Gabrielle Scott** joined Brooks in scoring 11 points to help lead the Lady Panthers.

PVAM shot well from the line, going 26-of-29 with a game high 89 percent.

The Lady Panthers took a 31-29 lead at halftime. The second set of minutes saw three ties until Washington connected on a pair of free throws to put PVAM back on top and help Brooks close out the game with a win.

Jasmyne Sanders scored 16 points to lead MVSU (8-18,7-8) while **Joncyee Sanders** posted 15 and **A'Shanti Weathers** added 12 for the Devilettes.

2013-2014 LADY PANTHER BASKETBALL GAME NOTES

GAME-BY-GAME RECAPS

GAME 25

Prairie View A&M 98

Alabama A&M 77

Sat., March 1, 2014

Shamiya Brooks recorded a game-high 22 points to lead Prairie View A&M University over Alabama A&M, 98-77, on Saturday at the William Nicks Buildings.

PVAMU (11-14,11-4) logged four other players in double figure scoring in the game. **LaReahn Washington** helped pace the squad with 20 points on 6-of-12 shooting from the field. **Jeanette Jackson** registered 19 points, shooting 9-of-14 from the free throw line while **Alexus Parker** notched 13 points. **Taylor Overshown** tallied double digit scoring efforts with 12.

The Lady Panthers took a 51-41 lead at halftime, off of shooting 51 percent from the field and 92 percent from the charity. PVAM led by 20 with 1:16 left to play after the break. **Shatterion Moffett** scored the final points of the match for AAMU (4-21,2-13) with 26 seconds to go but it didn't cut the lead by much.

Ebony Johnson led the Lady Bulldogs with 18 points as **Brittney Strickland** added 13 and a team best nine rebounds. **Jasmine Sanders** closed out the game with 11 points, shooting 4-of-9 for the field.

GAME 26

Alabama State 81

Prairie View A&M 78

Mon., March 3, 2014

Alabama State University defeated No.3 seeded, Prairie View A&M, in a 81-78 victory at the William Nick's Building Monday night.

ASU (15-12,8-8) maintained the lead in the first half before PVAMU's (11-15,11-5) **Shamiya Brooks** scored at the 9:26 minute mark to bring tie the game at 22. The Lady Hornets went on an 11-0 run on three, 3-pt shots from **Tucker** with 4:05 left in the first half. Once again the Lady Panthers knocked down buckets, but where only able to cut the lead to seven before ending the first half 43-36 in favor of the Lady Hornets.

ASU held a seven point advantage at the 14:34 mark giving them the largest lead of the second half. PVAM began chipping away at the Lady Hornets lead marking a 52-52 tie at the 11:55 mark. On an **Alexus Parker** tip-in Prairie View took their first lead of the half with 11:22 left on the clock. For the next 10 minutes of play the game saw the eighth and final tie, with the Lady Hornets pulling away at the 1:29 mark. ASU advanced their lead to five before ending the game on two **Nakiya Smith's** free throws.

Smith led ASU with 25 points making this her fifth game of 20 points or more and her third consecutive game of 25 points. **Kayla Tucker** marked a career and season high of 22 points shooting 6-9 from the arch. **Brittney Wright** also contributed to the win with 12 points and eight rebounds.

Jeanette Jackson scored 23 points for the Lady Panthers, while **Gabrielle Scott** added 16 points, **LaReahn Washington** posted 13 and **Alexus Parker** hauled in 12.

GAME 26

Southern 69

Prairie View A&M 59

Sat., March 6, 2014

Southern University tied with Prairie View A&M for 30 at halftime, but outscored PVAM 39-29 in the second half to defeat the Lady Panthers 69-59, Thursday inside the FG Clark Activity Center.

SU shot 56 percent in the second half and 90 percent from the line which helped them pull away from the visiting Lady Panthers.

Three players scored in double-figures for the Lady Jaguars. **Brittany Washington** had 14 points in just 22 minutes while **Kendra Coleman** added 13 points, eight rebounds and one steal in the win. **Jasmine Jefferson** came in scoring 12 points, a team high nine rebounds, three assist and two steals.

PVAMU were led by **Gabrielle Scott's** 15 points, **Asha Hampton-Finch's** 12 rebounds and **Alexus Parker's** first double-double with 12 points and 10 rebounds. **Jeanette Jackson** also finished in double figures with 12 points.

The Lady Panthers shot 36 percent in the first half but fell to 31 percent after the break.

GAME 27

Alcorn State 55

Prairie View A&M 48

Sat., March 8, 2014

Alcorn State University scored 27 points from the bench to help close out the regular season with a 55-48 victory over Prairie View A&M inside the David L. Whitney Complex.

ALCN (8-21,7-11) built a nine-point lead, 21-12, off of a set of free throw shooting by **Anastasia Tuset** with 3:59 to play in the first half. PVAM (11-17,11-7) quickly closed the gap before the half going on a 6-1 run but the Lady Braves snatch a 22-18 lead at the break.

PVAMU's **Jeanette Jackson** scored the first seven points to cut the Lady Braves lead to 26-24 at the 16:43 mark of the second half. Seconds later **Gabrielle Scott** tied the game at 26-26 on a made jumper.

The game went back and forth for a while until the Lady Braves burst open an eight-point 40-32 lead led by **Misha Jones** and **Ashtin McNichols** with just under nine minutes to play. But Jackson responded, scoring five consecutive points to cut the Lady Braves lead to 42-41 at 7:01 mark in the second half.

Back and forth both teams went for the next five and some change. Jones made a clutch jumper in the paint to give the Lady Braves a 51-46 lead with .47 seconds to play.

The Lady Panthers would score one more time but the Lady Braves connected on a host of free throw's to close out the Lady Panthers for the night and earn the win.

Jones led the Lady Braves with 13 points and seven rebounds. McNichols and **Angelica Wilson-Reid** each scored 11 points.

Jackson led the Lady Panthers with 21 points and six rebounds.

GAME 28

Prairie View A&M 71

Alabama State 61

Thur., March 13, 2014

Jeanette Jackson scored 25 points to lead Prairie View A&M over Alabama State in a 71-61 in the quarter-finals of the 2014 Toyota SWAC Basketball Tournament at the Toyota Center, Thursday.

Jackson recorded 15 points in the first half with twelve of her 25 coming from the free throw line. Jackson also finished with five steals and three assists. After leading 36-28 at the break, PVAMU (12-17) rallied a 63-54 advantage with 2:06 left in the game. In the final minutes of the match, the Lady Panthers went on a 6-0 to grab their largest lead of the half with 50 seconds left in the game. ASU's (16-14) **Ashunte Smith** responded with a three but it was not enough to close the gap.

LaReahn Washington chipped in 14 points while **Shamiya Brooks** registered 13 and **Alexus Parker** added 12 to help PVAMU earn a spot in the next round.

The Lady Panthers move onto the semi-finals and will take on top-seeded Southern on Friday, March 14 at 6:00 p.m.

For ASU, **Jamesha Blake** led the Lady Hornets with 10 points from 5-of-11 shooting.

2013-2014 LADY PANTHER BASKETBALL GAME NOTES

GAME 28

Prairie View A&M 72

Southern 43

Fri., March 14, 2014

The Prairie View A&M women's basketball team made its biggest statement of the season on Friday evening as they rolled past Southern 72-43 in the Toyota Center. As a result of the win, PVAMU will play for the SWAC Tournament Championship for the fourth consecutive year and seventh time in eight years as they'll battle SWAC rival Texas Southern on Saturday at noon in the Toyota Center.

With Southern sweeping the season series and winning the SWAC Regular Season Championship, the target was on its back as they entered the game looking to advance to its first SWAC Tourney Championship Game since 2010. Southern started off with a pair of four-point leads early on but an inspired PVAMU backcourt led by Gabrielle Scott, **Jeanette Jackson**, **Alexus Parker** and **LaReahn Washington** turned up the pressure and outscored Southern 31-9 over the final 14:56. During the run and for most of the first half, PVAMU found ways to get to the free throw line and took advantage of the opportunity as they finished 13-of-18 in the half en route to a 34-17 halftime lead.

Two baskets by Southern's **Cortnei Purnell** within the first three minutes cut the Lady Panthers' lead to 11 at 35-26 in the second half. Prairie View A&M wasted no time in reestablishing its dominance as **Larissa Scott** and **Jeanette Jackson** nailed consecutive jumpers. Southern's **Kendra Coleman** answered with a jumper of her own but the inside game of **Shamiya Brooks** and **Larissa Scott** went to work as Brooks scored four straight points followed by two free throws from Scott for a 21-point (48-27) lead.

With the game firmly in control, Prairie View A&M settled back into a comfortable groove and extended its lead to as much as 32 points with 5:30 remaining. The Lady Panthers received a huge opportunity to rest most of their starters the remainder of the way en route to claiming their first win over Southern since March 2, 2013.

Jackson, who needs only 18 points to become PVAMU's all-time single season scoring leader, led the way with 18 points. Parker, **Larissa Scott** and **Gabrielle Scott** and chipped in with 10 points apiece while **Shamiya Brooks** added eight points, two blocks and 11 rebounds.

Prairie View A&M will face SWAC rival TSU for the second consecutive year in postseason play as this year's edition is for a trip to the NCAA Tournament. Tip-off is set for noon at the Toyota Center in Downtown Houston.

2013-2014 LADY PANTHER BASKETBALL GAME NOTES

NUMERICAL

NO.	NAME	POS.	HT.	CL.	HOMETOWN (Previous School)
0	LaReahn Washington	G	5-8	Sr.	Houston, Texas (Booker T. Washington)
1	Jeanette Jackson	G	5-7	Jr.	Las Vegas, Nev. (Sierra Vista)
2	Shamiya Brooks	C	6-4	So.	West Point, Ga. (Troupe County)
3	Alexus Parker	G	5-10	Fr.	Savannah, Ga. (Calvary Day School)
5	Shaneece Stephens	G	5-8	Jr.	Port St. Lucie, Fla. (Brevard CC)
10	Precious Roberts	G	5-9	Jr.	Fernandina Beach, Fla. (Indian River CC)
11	Gabrielle Scott	G	5-7	R-So.	Vanceleave, Miss. (Vanceleave)
13	Taylor Overshown	G	5-10	So.	Houston, Texas (Eisenhower)
22	Larissa Scott	F	6-0	Jr.	Cypress, Texas (Cy Falls)
33	Tonisha Lacey	C	6-3	Sr.	Oakland, Calif. (Pasadena City College)
44	Asha Hampton-Finch	F	6-3	Jr.	San Antonio, Texas (Roosevelt)

COACHING STAFF

Interim Head Coach:	Dawn Brown (Jackson State '05)	4th Season at Prairie View A&M, 1st as head coach
Assistant Coach:	Tron Griffin (Bethune Cookman '06)	2nd Season at Prairie View A&M
Assistant Coach:	Damon Moore (Cleveland State '98)	1st Season at Prairie View A&M
Dir. of Player Development:	Larry McNeil (Talladega '90)	1st Season at Prairie View A&M

ALPHABETICAL

NO.	NAME	POS.	HT.	CL.	HOMETOWN (Previous School)
2	Shamiya Brooks	C	6-4	So.	West Point, Ga. (Troupe County)
44	Asha Hampton-Finch	F	6-3	Jr.	San Antonio, Texas (Roosevelt)
1	Jeanette Jackson	G	5-7	Jr.	Las Vegas, Nev. (Sierra Vista)
33	Tonisha Lacey	C	6-3	Sr.	Oakland, Calif. (Pasadena City College)
13	Taylor Overshown	G	5-10	So.	Houston, Texas (Eisenhower)
3	Alexus Parker	G	5-10	Fr.	Savannah, Ga. (Calvary Day School)
10	Precious Roberts	G	5-9	Jr.	Fernandina Beach, Fla. (Indian River CC)
11	Gabrielle Scott	G	5-7	R-So.	Vanceleave, Miss. (Vanceleave)
22	Larissa Scott	F	6-0	Jr.	Cypress, Texas (Cy Falls)
5	Shaneece Stephens	G	5-8	Jr.	Port St. Lucie, Fla. (Brevard CC)
0	LaReahn Washington	G	5-8	Sr.	Houston, Texas (Booker T. Washington)

2013-2014 LADY PANTHER BASKETBALL GAME NOTES

PRONUNCIATION

2	Shamiya Brooks	Shu - My - yuh
44	Asha Hampton-Finch	Ah - shu
1	Jeanette Jackson	Ji - net
33	Tonisha Lacey	Two - nēē - shu
22	Larissa Scott	Lu - ri - su
5	Shaneece Stephens	Shu - nēēce
00	LaReahn Washington	Lu - rain

BY STATE / COUNTRY

CALIFORNIA (1)

Lacey

FLORIDA (2)

Roberts

Stephens

GEORGIA (2)

Brooks

Parker

MISSISSIPPI (1)

Gabrielle Scott

NEVADA (1)

Jackson

TEXAS (4)

Hampton-Finch

Overshown

Larissa Scott

Washington

BY HEIGHT

5-7: Jackson, G. Scott

5-8: Stephens, Washington

5-9: Roberts

5-10: Overshown, Parker

6-0: L. Scott

6-3: Hampton-Finch, Lacey

6-4: Brooks



#0 LAREAHN WASHINGTON

Position: G

Height: 5-8

Class: Senior

Hometown: Houston, Texas

Previous School: Booker T. Washington

JUNIOR (2012-13): Averaged 3.5 points, 1.9 assists, 2.6 rebounds and tallied 34 steals in 30 games with one start...scored a career-high 14 points at Southern...pulled down seven rebounds at Texas A&M...nailed 7of-8 free throws at Arkansas-Pine Bluff (Jan. 21, 2013) ...dished out five assists versus Stephen F. Austin.

SOPHOMORE (2011-12): Averaged 3.8 points, 2.5 rebounds, 2.1 assists and 1.2 steals in 33 games...scored a career-high 13 points with a career high .714 (5-7) field goal percentage against Mississippi Valley in the SWAC Tournament (March 9, 2012)...dished out a career-high seven assists at Alcorn State (March 3, 2012)...recorded a career-high of five steals at Jackson State (Jan. 14, 2012)...averaged nine points, 2.33 assists and 2.67 steals per game during the SWAC Tournament (March 8-10, 2012).

FRESHMAN (2010-11): Played in 27 games as a freshman...Averaged 7.2 minutes and 1.2 points per contest...shot 67 percent from the foul line.

High School: A 2010 graduate of Booker T. Washington High School in Houston, Texas...Three-year starter who earned four letters in basketball playing for head coach Sylvia Anderson...Earned First Team All-District and All-Region honors by The Houston Chronicle in her sophomore, junior and senior years Washington was also named Second Team All-Greater Houston as a freshman by The Houston Chronicle...One of the leading scorers in the city of Houston as she averaged 20 points and eight rebounds per game...Also lettered in Track and Field and finished first in both district and regionals.



#1 JEANETTE JACKSON

Position: G

Height: 5-7

Class: Junior

Hometown: Las Vegas, Nev.

Previous School: Sierra Vista

SOPHOMORE (2012-13): Averaged 8.2 points, 2.9 assists and 1.5 steals in her sophomore campaign...Finished fourth in the SWAC, shooting 76.1 percent from the free throw line...Finished first on the team and seventh in the SWAC averaging 2.9 assists per contest...Scored a season-high 18 points at Jackson State on Feb. 11, 2013...Dished out a season-high of eight assists to complement 14 points and two steals at Grambling State (Feb. 9, 2013)...Recorded season-highs in steals with five twice, first at Alcorn (Jan. 2, 2013) and then vs. Arkansas-Pine Bluff (Feb. 18, 2013)...Was perfect from the foul line (five shot minimum) twice, shooting 6-for-6 vs. Alabama State (Jan. 26, 2013) and going 8-for-8 at Grambling State (Feb. 9, 2013)...Shooting from the field reached season-high percentages of .571 twice. She shot 4-for-7 at Arkansas-Pine Bluff (Jan. 21, 2013) and then went 4-for-7 from the field at Alabama A&M en route to a 16-point performance...Made a season-high of three, three-point shots vs. Texas Southern as Prairie View A&M eliminated the Lady Tigers from the SWAC Tournament. Jackson was a perfect 3-for-3 from three-point range...Scored 10 points or more in 11 games in the 2012-13 season.

FRESHMAN (2011-12): Averaged nine points, 2.7 rebounds, 3.1 assists and 1.9 steals as a true freshman for Prairie View A&M...scored a career-high 29 points against Arkansas-Pine Bluff (Jan. 23, 2012)...Recorded career-highs in steals with seven twice; first against Northwestern State (Nov. 29, 2011) and then against Arkansas-Pine Bluff (Jan. 23, 2011). Jackson connected on a career-high four, three-point field goals twice. She went 4-for-5 with 18 points against Marquette (Nov. 11, 2011) and went 4-for-5 with 29 points against Arkansas-Pine Bluff (Jan. 23, 2012)...Had a career-high seven steals against Northwestern State (Nov. 29, 2011) and then versus Arkansas-Pine Bluff (Jan. 23, 2012)...Was selected to the Paradise Jam All-Tournament team on Nov. 26, 2011 after averaging 14.3 points, four assists and 2.6 points in three games against Michigan, Marquette, and Washington State.

HIGH SCHOOL: Received First Team Class 4A All-State Honors this past season...earned Sunset Region All-Southwest Division MVP Honors...averaged 19.3 points, seven assists and 5.6 steals...guided team to the Sunset Region semifinals...helped team win 20-plus games over the past three seasons...scored 20 or more points per game on more than 10 occasions as a senior...also ran track for her high school.



#2 SHAMIYA BROOKS

Position: C
Height: 6-4
Class: Sophomore
Hometown: West Point, Ga.
Previous School: Troupe

FRESHMAN (2012-13): Brooks appeared in 18 games playing as a true freshman... Averaged 1.6 points and 1.2 rebounds, playing 4.5 minutes per game with a team-high field goal percentage of .600 on the season... Scored a career-high of six points and grabbed a career-high of seven rebounds vs. Hampton in the Toledo Invitational (Dec. 20, 2012). Brooks also played for a career-high of 15 minutes and shot a career-high percentage of 1.000 going 2-for-2 from the foul line vs. Hampton (Dec. 20, 2012).

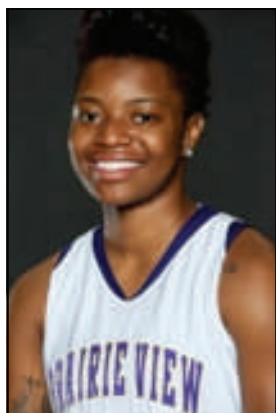
HIGH SCHOOL: As senior Brooks established herself as one of the top players in the state of Georgia, earning an All-State Honorable Mention selection... averaged 15 points and 10 rebounds as a senior... led Troupe County to a 23-6 record as a senior and the Class 3A State Quarterfinals... was selected to play in the Herbert Green All-Star Game, in which the top players from Georgia and Alabama face off... four-year letter winner and starter... led Troup County to the Class 3A state quarterfinals as a junior, averaging 12 points and 10 rebounds in her junior campaign.



#3 ALEXUS PARKER

Position: G
Height: 5-10
Class: Freshman
Hometown: Savannah, Ga.
Previous School: Calvary Day School

HIGH SCHOOL: As a junior she led her team to the first round of the Class A State Tournament, averaging 15.6 points, 6.8 rebounds, 1.7 steals and 1.3 assists per game.... Parker was second on her team in scoring and led the Cavaliers in rebounds. As a senior Parker was the leading scorer, averaging 22.6 points per game... Averaged a team-high 8.6 rebounds per game with 2.1 steals and 3.1 assists... She steals and assists averages were second on the team... Led Calvary Day to the Class A Private State Tournament semi-final game.



#5 SHENEECE STEPHENS

Position: G

Height: 5-9

Class: Junior

Hometown: Port St. Lucie, Fla.

Previous School: Brevard CC

JUNIOR COLLEGE: Stephens averaged a team-high 15.9 points per game as a sophomore at Brevard Community College, and she scored a career-high 29 points on Dec. 8, 2012 against Hillsborough CC...She averaged 2.9 rebounds per game as a sophomore... Was selected to the All-Southern Conference Second Team selection as a sophomore...She was one of 40 select players across the nation to compete in the NJCAA WBCA All-Star game as a freshman at Brevard Community College...Stephens was selected to the All-Southern Conference First Team as a freshman...She averaged a team-high 18.4 points as a freshman...She also averaged 2.9 rebounds per game with 1.1 assists and 1.9 steals.



#10 PRECIOUS ROBERTS

Position: G

Height: 5-9

Class: Junior

Hometown: Fernandina Beach, Fla.

Previous School: Indian River CC

JUNIOR COLLEGE: Roberts averaged 8.7 points with 4.4 rebounds per game as a sophomore for Indian River State College...She made an impact defensively with 1.6 steals per game...Roberts averaged 10.4 points and 5 rebounds per game as a freshman with 2.2 steals and 1.4 assists per contest.

HIGH SCHOOL: As a senior at Raines High School in Jacksonville, Fla., she averaged 15.1 points, nine rebounds and 5.4 assists per game... She led her team as a senior with 5.8 steals per contest.



#11 GABRIELLE SCOTT

REDSHIRT FRESHMAN (2012-13): Scott appeared in 32 games, starting 18 for the Lady Panthers...Averaged 6.2 points, 1.2 rebounds and tallied 24 assists in her first year on the court...Finished third in the SWAC and first on the team in three-point percentage, shooting 35.9 percent from downtown...Scored a career-high of 20 points vs. Hampton (Dec. 20, 2012), converting a career-high of eight field goals including four three-point shots. Scott also grabbed a career-high of four rebounds and recorded a steal on that career night...Came through with a career-high of four steals to complement eight points at Grambling State (Feb. 9, 2013)...Shoot a career-high 70 percent from the field (minimum five shots) while eliminating Jackson State from the SWAC Tournament (March 14, 2013)...Converted career-highs of four three-point field goals twice. She went 4-for-8 vs. Hampton (Dec. 20, 2012) then shot 4-for-6 vs. Baylor in the NCAA Tournament (March 24, 2012) for 14 points...Shot 75 percent from downtown twice (minimum of three attempts) for career highs. Scott shot 3-for-4 from three-point range vs. Jackson State (March 14, 2013) and then went 3-for-4 at Mississippi Valley (Jan. 19, 2013)...Scored 10 points or more in eight games in the 2012-13 season.

FRESHMAN (2011-12): Medical Redshirt.

FRESHMAN (2010-11): Redshirt.

HIGH SCHOOL: A 2010 graduate of Vancleave High School...Listed as the second-best player in the state of Mississippi by ESPN.com...Ranked fourth by Mississippi Sportstalk.com...Averaged 20 points and five assists as a senior...Finalist for the Biloxi and South Mississippi Sun Herald Basketball Player of the Year...Guided her team to the Class 5A South State semifinals...Earned District MVP and All-State Honorable Mention honors.



#13 TAYLOR OVERSHOWN

Position: G

Height: 5-10

Class: Sophomore

Hometown: Houston, Texas

Previous School: Eisenhower

FRESHMAN (2012-13): Overshown appeared in 16 games as a freshman, averaging 4.8 minutes and .7 points per game...Set career highs in four statistical categories vs. Utah State (Nov. 20, 2012)...Scored a career-high four points on 2-for-2 shooting from the floor, while dishing out a career-high three rebounds with three assists to complement a career-high two steals...Registered a career-high of 20 minutes played vs. Stephen F. Austin (Nov. 13, 2012), and she dished out three assists and one rebound in the process.

HIGH SCHOOL: Averaged 15.4 points per game as a senior for Eisenhower in the 2011-12 season, she also averaged eight assists and five rebounds...was a District 18-5A First Team selection in 2012...District 18-5A All-Academic Team...Finished second in district with 18-5A with a 9-2 record.



#22 LARISSA SCOTT

Position: F

Height: 6-0

Class: Junior

Hometown: Cypress, Texas

Previous School: Cy Falls

SOPHOMORE (2012-13): Scott established herself as one of the premiere post players in the SWAC...She averaged 8.3 points and 7.2 rebounds, 1.3 blocks and 1.3 steals per game...She was the conference's fourth-leading rebounder and fifth-leading blocker... She led the Lady Panthers in blocks (1.3 per game) and was the second-leading rebounder...Scott's third team All-SWAC selection was the first pre-tournament, post-season award of her career...Recorded four double-doubles as a sophomore...Averaged 30.8 minutes per game (second on the team)...Recorded a career-high 24 points in the SWAC Tournament Championship games vs. Mississippi Valley State (March 16, 2013) and tied her career-high in blocks with five...Finished second on the team and third in the SWAC, shooting 48.6 percent from the field...Tallied a season-high 15 rebounds vs. Texas Southern (Jan. 6, 2013)...Shot 69 percent from the free throw line...Finished sixth in the SWAC with a 1.3 blocks per game average...Selected to the 2012-13 Preseason All-SWAC team.

FRESHMAN (2011-12): Selected to the SWAC All-tournament team after averaging 10.3 points and 11.3 rebounds in her three tournament games...Finished the season with five double-doubles...Averaged 5.7 points and 6.6 rebounds...recorded her first career double-double against Louisiana Tech with 15 points and a career-high 19 rebounds (Dec. 18, 2011)...Recorded second double-double with an 11 points, 10 rebounds performance at Southern (March 1, 2012)...Set a career-high in points with 21 and recorded third double-double of the season by adding 11 rebounds at Alcorn State (March, 3, 2012)...Recorded fourth double-double with 13 points and 11 rebounds versus Alabama State (March 8, 2012)...had final double-double versus Mississippi Valley (March 9, 2012)...led Prairie View A&M with five double-doubles...Recorded a career-high five blocks vs. Alabama State (Feb. 27, 2013)... Averaged 11.2 points and 10.2 rebounds over the final six games of the season for Prairie View A&M...Her 6.6 rebounds average was sixth in the SWAC.

HIGH SCHOOL: Led a Cy Falls team, ranked as high as 13th nationally, to a 37-2 record and the UIL Class 5A Regional Semifinal game...Averaged 10.7 points, 9.8 rebounds, 1.7 blocks and 1.8 steals as a senior...Selected to District 17-5A First Team in 2011.



#33 TONISHA LACEY

Position: C
Height: 6-3
Class: Senior
Hometown: Oakland, Calif.
Previous School: Pasadena City College

JUNIOR (2012-13): Appeared in 14 games as a junior with one start...Averaged 4.2 minutes, .5 points and .9 rebounds per game...Made career-highs with two points three times during the season: vs. Rice (Nov. 9, 2012), at Alcorn State (Jan. 2, 2013) and at Arkansas-Pine Bluff (Jan. 21, 2013)...Grabbed a career-high three rebounds at Grambling State (Feb. 28, 2013)...Recorded a career-high two steals at Rice (Nov. 11, 2012).

JUNIOR COLLEGE: As a sophomore Lacey led Pasadena CC in rebounding with 10 boards per game while also providing eight points per contest during the 2011-12 season...she helped lead her team to the second round of the SoCal Regional Playoffs as a sophomore starter at center...earned All-South Coast Conference First Team honors as a sophomore...as a freshman, Lacey averaged 3.7 points and 4.8 rebounds, playing a critical role off of the bench...she played a part in Pasadena CC making it to the third round of the playoffs.



#44 ASHA HAMPTON-FINCH

Position: F
Height: 6-3
Class: Junior
Hometown: San Antonio, Texas
Previous School: Roosevelt

SOPHOMORE (2012-13): Appeared in 31 games as a sophomore, starting in two contests...Averaged one point and 1.2 rebounds per game...Pulled down a season-high five rebounds at Arkansas-Pine Bluff (Jan. 21, 2013)...Scored a season-high of four points vs. Southern (March 2, 2013)...Played a season-high of 27 minutes at Arkansas-Pine Bluff (Jan. 21, 2013).

FRESHMAN (2011-12): Averaged 2.8 points and 2.3 rebounds in 33 games, including six starts...Scored a career-high 13 points versus Grambling State (Jan. 16, 2012)...Scored 11 points versus Louisiana Tech (Dec. 18, 2012)...Grabbed a career-high seven rebounds versus Texas Wesleyan (Dec. 28, 2012)...Snagged six rebounds versus Rice (Nov. 11, 2012) and versus Michigan (Nov. 24, 2012)...Shot a career-high .714 percent (5-7) from the field in a 13-point performance versus Grambling State (Jan. 16, 2012)...Recorded a career-high four steals versus Marquette (Nov 25, 2012)...Had a career-high three blocks versus Arkansas-Pine Bluff (Jan. 23, 2012).

HIGH SCHOOL: Ranked 82nd nationally at her position by ESPN.com...a three-star recruit who received a scouts grade of 85...averaged 8.3 points and five rebounds per game in 2009-10...ranked the ninth-best player in the city of San Antonio...participated on the South Texas Hoyas club team and also ran track for her school.

PRAIRIE VIEW WOMEN'S BASKETBALL
 Prairie View A&M Combined Team Statistics (as of Mar 14, 2014)
 All games

RECORD:	OVERALL	HOME	AWAY	NEUTRAL
ALL GAMES	13-17	6-4	5-10	2-3
CONFERENCE	11-7	6-3	5-4	0-0
NON-CONFERENCE	2-10	0-1	0-6	2-3

##	Player	gp-gs	min	avg	Total		3-Point		F-Throw		Rebounds			pf	dq	a	to	blk	stl	pts	avg	
					fg-fga	fg%	3fg-fga	3fg%	ft-fa	ft%	off	def	tot									avg
01	Jackson, Jeanette	30-30	1140	38.0	172-516	.333	60-185	.324	175-222	.788	13	82	95	3.2	90	3	114	122	5	78	579	19.3
00	Washington,LaReahn	30-26	911	30.4	85-197	.431	9-26	.346	110-154	.714	32	95	127	4.2	111	6	79	119	6	56	289	9.6
03	Parker, Alexis	26-16	673	25.9	71-217	.327	23-99	.232	59-87	.678	31	76	107	4.1	48	1	14	47	4	26	224	8.6
22	Scott, Larissa	19-13	540	28.4	61-139	.439	0-2	.000	35-60	.583	55	103	158	8.3	49	0	23	50	28	19	157	8.3
11	Scott, Gabrielle	30-27	798	26.6	88-262	.336	32-102	.314	37-41	.902	24	52	76	2.5	76	2	28	63	1	35	245	8.2
02	Brooks, Shamiya	28-5	433	15.5	78-151	.517	0-0	.000	37-56	.661	83	95	178	6.4	93	8	9	40	54	11	193	6.9
44	Hampton-Finch, Asha	30-29	922	30.7	46-136	.338	0-1	.000	47-73	.644	57	80	137	4.6	95	6	17	32	18	25	139	4.6
05	Stephens, Shaneece	29-0	208	7.2	21-85	.247	1-12	.083	8-22	.364	12	15	27	0.9	29	1	4	21	2	12	51	1.8
12	Burton, Michaela	5-4	77	15.4	2-11	.182	1-6	.167	2-4	.500	2	2	4	0.8	6	0	1	5	0	0	7	1.4
13	Overshown, Taylor	25-0	134	5.4	13-33	.394	3-8	.375	3-6	.500	10	12	22	0.9	6	0	7	16	3	7	32	1.3
10	Roberts, Precious	26-0	153	5.9	11-64	.172	2-4	.500	6-14	.429	11	14	25	1.0	25	0	3	7	1	4	30	1.2
33	Lacey, Tonisha	14-0	104	7.4	6-13	.462	0-0	.000	4-7	.571	13	18	31	2.2	15	0	0	5	0	4	16	1.1
20	Vaughn, Cameron	3-0	7	2.3	0-0	.000	0-0	.000	0-1	.000	1	1	2	0.7	1	0	0	1	0	0	0	0.0
Team											80	79	159				16					
Total.....		30	6100		654-1824	.359	131-445	.294	523-747	.700	424	724	1148	38.3	644	27	299	544	122	277	1962	65.4
Opponents.....		30	6102		712-1786	.399	120-421	.285	561-799	.702	465	869	1334	44.5	662	-	374	602	105	259	2105	70.2

TEAM STATISTICS	PVAMWBB	OPP	Date	Opponent	Score	Att.
SCORING	1962	2105	11/08/13	RICE	L 63-77	1786
Points per game	65.4	70.2	11/13/13	at Texas A&M	L 27-76	4053
Scoring margin	-4.8	-	11/17/13	at Florida State	L 37-88	1848
FIELD GOALS-ATT	654-1824	712-1786	11/30/13	vs Stephen F. Austin	L 70-76	522
Field goal pct	.359	.399	12/01/13	at Houston	L 46-74	621
3 POINT FG-ATT	131-445	120-421	12/6/13	at FIU	L 52-77	453
3-point FG pct	.294	.285	12/14/13	vs James Madison	L 50-79	1011
3-pt FG made per game	4.4	4.0	12/15/13	vs DREXEL	L 45-53	0
FREE THROWS-ATT	523-747	561-799	12/18/13	at Central Michigan	L 66-90	3793
Free throw pct	.700	.702	12/28/13	at TCU	L 47-76	1859
F-Throws made per game	17.4	18.7	* 1-4-14	SOUTHERN	L 74-88	347
REBOUNDS	1148	1334	* 1/6/14	ALCORN STATE	w 71-68	337
Rebounds per game	38.3	44.5	* 1/11/14	at Texas Southern	L 59-63	4524
Rebounding margin	-6.2	-	* 1/18/14	at Jackson State	Lo2 82-83	314
ASSISTS	299	374	* 01/20/14	at Grambling State University	w 72-61	1347
Assists per game	10.0	12.5	* 01/25/14	ARKANSAS-PINE BLUFF	w 75-62	828
TURNOVERS	544	602	* 1/27/14	MISSISSIPPI VALLEY S	w 77-59	1139
Turnovers per game	18.1	20.1	* 02/01/14	at Alabama State	w 58-47	523
Turnover margin	+1.9	-	* 2/3/14	at Alabama A&M	w 68-60	821
Assist/turnover ratio	0.5	0.6	* 2/8/14	TEXAS SOUTHERN	L 70-74	3900
STEALS	277	259	* 2/15/14	JACKSON STATE	w 92-76	606
Steals per game	9.2	8.6	* 02/17/14	GRAMBLING STATE	wo2 82-75	1557
BLOCKS	122	105	* 2/22/14	at Arkansas-Pine Bluff	w 80-67	2440
Blocks per game	4.1	3.5	* 2-24-14	at Mississippi Valley S	w 73-70	798
ATTENDANCE	12592	25474	* 03/01/14	ALABAMA A&M	w 98-77	1043
Home games-Avg/Game	10-1259	15-1596	* 3/3/14	ALABAMA STATE	L 78-81	1049
Neutral site-Avg/Game	-	5-307	* 03/06/14	at Southern U.	L 59-69	547
Score by Periods	1st	2nd	OT	OT2	Totals	
Prairie View A&M	905	1009	18	30	1962	03/13/14 vs Alabama State w 71-61 0
Opponents	975	1088	18	24	2105	03/14/14 vs Southern w 72-43 0

* - Conference game

PRAIRIE VIEW WOMEN'S BASKETBALL
 Prairie View A&M Season Box Score (as of Mar 14, 2014)
 All games

RECORD:	OVERALL	HOME	AWAY	NEUTRAL
ALL GAMES	13-17	6-4	5-10	2-3
CONFERENCE	11-7	6-3	5-4	0-0
NON-CONFERENCE	2-10	0-1	0-6	2-3

##	Player	gp-gs	min	avg	Total		3-Point		F-Throw		Rebounds										pts	avg
					fg-fga	fg%	3fg-fga	3fg%	ft-fa	ft%	off	def	tot	avg	pf	dq	a	to	blk	stl		
01	Jackson, Jeanette	30-30	1140	38.0	172-516	.333	60-185	.324	175-222	.788	13	82	95	3.2	90	3	114	122	5	78	579	19.3
	Conference-Only...	18-18	703	39.1	112-323	.347	36-117	.308	116-143	.811	9	53	62	3.4	51	1	76	64	5	53	376	20.9
00	Washington,LaReahn	30-26	911	30.4	85-197	.431	9-26	.346	110-154	.714	32	95	127	4.2	111	6	79	119	6	56	289	9.6
	Conference-Only...	18-17	617	34.3	65-143	.455	6-18	.333	84-117	.718	21	62	83	4.6	67	4	59	76	3	39	220	12.2
03	Parker, Alexis	26-16	673	25.9	71-217	.327	23-99	.232	59-87	.678	31	76	107	4.1	48	1	14	47	4	26	224	8.6
	Conference-Only...	18-11	490	27.2	57-152	.375	16-66	.242	45-65	.692	23	58	81	4.5	29	1	11	29	3	23	175	9.7
22	Scott, Larissa	19-13	540	28.4	61-139	.439	0-2	.000	35-60	.583	55	103	158	8.3	49	0	23	50	28	19	157	8.3
	Conference-Only...	7-3	162	23.1	26-53	.491	0-1	.000	16-23	.696	22	40	62	8.9	20	0	7	18	10	5	68	9.7
11	Scott, Gabrielle	30-27	798	26.6	88-262	.336	32-102	.314	37-41	.902	24	52	76	2.5	76	2	28	63	1	35	245	8.2
	Conference-Only...	18-18	535	29.7	62-176	.352	24-71	.338	28-31	.903	16	31	47	2.6	48	2	19	43	1	25	176	9.8
02	Brooks, Shamiya	28-5	433	15.5	78-151	.517	0-0	.000	37-56	.661	83	95	178	6.4	93	8	9	40	54	11	193	6.9
	Conference-Only...	18-5	330	18.3	62-121	.512	0-0	.000	34-48	.708	67	70	137	7.6	69	6	6	30	45	9	158	8.8
44	Hampton-Finch, Asha	30-29	922	30.7	46-136	.338	0-1	.000	47-73	.644	57	80	137	4.6	95	6	17	32	18	25	139	4.6
	Conference-Only...	18-18	571	31.7	28-82	.341	0-1	.000	17-29	.586	39	56	95	5.3	60	5	10	16	16	14	73	4.1
05	Stephens, Shaneece	29-0	208	7.2	21-85	.247	1-12	.083	8-22	.364	12	15	27	0.9	29	1	4	21	2	12	51	1.8
	Conference-Only...	17-0	100	5.9	8-43	.186	0-6	.000	3-6	.500	6	11	17	1.0	15	1	3	9	2	2	19	1.1
12	Burton, Michaela	5-4	77	15.4	2-11	.182	1-6	.167	2-4	.500	2	2	4	0.8	6	0	1	5	0	0	7	1.4
	Conference-Only...	0-0	0	0.0	0-0	.000	0-0	.000	0-0	.000	0	0	0	0.0	0	0	0	0	0	0	0	0.0
13	Overshown, Taylor	25-0	134	5.4	13-33	.394	3-8	.375	3-6	.500	10	12	22	0.9	6	0	7	16	3	7	32	1.3
	Conference-Only...	15-0	84	5.6	13-26	.500	3-6	.500	1-2	.500	9	9	18	1.2	3	0	5	8	1	5	30	2.0
10	Roberts, Precious	26-0	153	5.9	11-64	.172	2-4	.500	6-14	.429	11	14	25	1.0	25	0	3	7	1	4	30	1.2
	Conference-Only...	15-0	85	5.7	7-35	.200	1-3	.333	6-11	.545	6	9	15	1.0	10	0	3	4	1	1	21	1.4
33	Lacey, Tonisha	14-0	104	7.4	6-13	.462	0-0	.000	4-7	.571	13	18	31	2.2	15	0	0	5	0	4	16	1.1
	Conference-Only...	4-0	23	5.8	0-0	.000	0-0	.000	0-0	.000	0	3	3	0.8	4	0	0	1	0	2	0	0.0
20	Vaughn, Cameron	3-0	7	2.3	0-0	.000	0-0	.000	0-1	.000	1	1	2	0.7	1	0	0	1	0	0	0	0.0
	Conference-Only...	0-0	0	0.0	0-0	.000	0-0	.000	0-0	.000	0	0	0	0.0	0	0	0	0	0	0	0	0.0
	Team										80	79	159				16					
	Team										54	52	106				11					
	Total.....	30	6100		654-1824	.359	131-445	.294	523-747	.700	424	724	1148	38.3	644	27	299	544	122	277	1962	65.4
	Conference-Only...	18	3700		440-1154	.381	86-289	.298	350-475	.737	272	454	726	40.3	376	20	199	309	87	178	1316	73.1
	Opponents.....	30	6102		712-1786	.399	120-421	.285	561-799	.702	465	869	1334	44.5	662	-	374	602	105	259	2105	70.2
	Conference-Only...	18	3702		414-1082	.383	70-247	.283	337-481	.701	276	510	786	43.7	401	15	199	377	63	147	1235	68.6

Score by Periods	1st	2nd	OT	OT2	Totals
Prairie View A&M	905	1009	18	30	1962
Opponents	975	1088	18	24	2105

PRAIRIE VIEW WOMEN'S BASKETBALL
 Prairie View A&M Combined Team Statistics (as of Mar 14, 2014)
 All games

RECORD:	OVERALL	HOME	AWAY	NEUTRAL
ALL GAMES	13-17	6-4	5-10	2-3
CONFERENCE	11-7	6-3	5-4	0-0
NON-CONFERENCE	2-10	0-1	0-6	2-3

##	Player	gp-gs	min	avg	Total		3-Point		F-Throw		Rebounds				pf	dq	a	to	blk	stl	pts	avg
					fg-fga	fg%	3fg-fga	3fg%	ft-fa	ft%	off	def	tot	avg								
01	Jackson, Jeanette	30-30	1140	38.0	172-516	.333	60-185	.324	175-222	.788	13	82	95	3.2	90	3	114	122	5	78	579	19.3
00	Washington,LaReahn	30-26	911	30.4	85-197	.431	9-26	.346	110-154	.714	32	95	127	4.2	111	6	79	119	6	56	289	9.6
03	Parker, Alexis	26-16	673	25.9	71-217	.327	23-99	.232	59-87	.678	31	76	107	4.1	48	1	14	47	4	26	224	8.6
22	Scott, Larissa	19-13	540	28.4	61-139	.439	0-2	.000	35-60	.583	55	103	158	8.3	49	0	23	50	28	19	157	8.3
11	Scott, Gabrielle	30-27	798	26.6	88-262	.336	32-102	.314	37-41	.902	24	52	76	2.5	76	2	28	63	1	35	245	8.2
02	Brooks, Shamiya	28-5	433	15.5	78-151	.517	0-0	.000	37-56	.661	83	95	178	6.4	93	8	9	40	54	11	193	6.9
44	Hampton-Finch, Asha	30-29	922	30.7	46-136	.338	0-1	.000	47-73	.644	57	80	137	4.6	95	6	17	32	18	25	139	4.6
05	Stephens, Shaneece	29-0	208	7.2	21-85	.247	1-12	.083	8-22	.364	12	15	27	0.9	29	1	4	21	2	12	51	1.8
12	Burton, Michaela	5-4	77	15.4	2-11	.182	1-6	.167	2-4	.500	2	2	4	0.8	6	0	1	5	0	0	7	1.4
13	Overshown, Taylor	25-0	134	5.4	13-33	.394	3-8	.375	3-6	.500	10	12	22	0.9	6	0	7	16	3	7	32	1.3
10	Roberts, Precious	26-0	153	5.9	11-64	.172	2-4	.500	6-14	.429	11	14	25	1.0	25	0	3	7	1	4	30	1.2
33	Lacey, Tonisha	14-0	104	7.4	6-13	.462	0-0	.000	4-7	.571	13	18	31	2.2	15	0	0	5	0	4	16	1.1
20	Vaughn, Cameron	3-0	7	2.3	0-0	.000	0-0	.000	0-1	.000	1	1	2	0.7	1	0	0	1	0	0	0	0.0
Team											80	79	159				16					
Total.....		30	6100		654-1824	.359	131-445	.294	523-747	.700	424	724	1148	38.3	644	27	299	544	122	277	1962	65.4
Opponents.....		30	6102		712-1786	.399	120-421	.285	561-799	.702	465	869	1334	44.5	662	-	374	602	105	259	2105	70.2

TEAM STATISTICS	PVAMWBB	OPP	Date	Opponent	Score	Att.
SCORING	1962	2105	11/08/13	RICE	L 63-77	1786
Points per game	65.4	70.2	11/13/13	at Texas A&M	L 27-76	4053
Scoring margin	-4.8	-	11/17/13	at Florida State	L 37-88	1848
FIELD GOALS-ATT	654-1824	712-1786	11/30/13	vs Stephen F. Austin	L 70-76	522
Field goal pct	.359	.399	12/01/13	at Houston	L 46-74	621
3 POINT FG-ATT	131-445	120-421	12/6/13	at FIU	L 52-77	453
3-point FG pct	.294	.285	12/14/13	vs James Madison	L 50-79	1011
3-pt FG made per game	4.4	4.0	12/15/13	vs DREXEL	L 45-53	0
FREE THROWS-ATT	523-747	561-799	12/18/13	at Central Michigan	L 66-90	3793
Free throw pct	.700	.702	12/28/13	at TCU	L 47-76	1859
F-Throws made per game	17.4	18.7	* 1-4-14	SOUTHERN	L 74-88	347
REBOUNDS	1148	1334	* 1/6/14	ALCORN STATE	w 71-68	337
Rebounds per game	38.3	44.5	* 1/11/14	at Texas Southern	L 59-63	4524
Rebounding margin	-6.2	-	* 1/18/14	at Jackson State	Lo2 82-83	314
ASSISTS	299	374	* 01/20/14	at Grambling State University	w 72-61	1347
Assists per game	10.0	12.5	* 01/25/14	ARKANSAS-PINE BLUFF	w 75-62	828
TURNOVERS	544	602	* 1/27/14	MISSISSIPPI VALLEY S	w 77-59	1139
Turnovers per game	18.1	20.1	* 02/01/14	at Alabama State	w 58-47	523
Turnover margin	+1.9	-	* 2/3/14	at Alabama A&M	w 68-60	821
Assist/turnover ratio	0.5	0.6	* 2/8/14	TEXAS SOUTHERN	L 70-74	3900
STEALS	277	259	* 2/15/14	JACKSON STATE	w 92-76	606
Steals per game	9.2	8.6	* 02/17/14	GRAMBLING STATE	Wo2 82-75	1557
BLOCKS	122	105	* 2/22/14	at Arkansas-Pine Bluff	w 80-67	2440
Blocks per game	4.1	3.5	* 2-24-14	at Mississippi Valley S	w 73-70	798
ATTENDANCE	12592	25474	* 03/01/14	ALABAMA A&M	w 98-77	1043
Home games-Avg/Game	10-1259	15-1596	* 3/3/14	ALABAMA STATE	L 78-81	1049
Neutral site-Avg/Game	-	5-307	* 03/06/14	at Southern U.	L 59-69	547
Score by Periods	1st	2nd	OT	OT2	Totals	
Prairie View A&M	905	1009	18	30	1962	
Opponents	975	1088	18	24	2105	

* - Conference game

PRAIRIE VIEW WOMEN'S BASKETBALL
 Prairie View A&M Overall Team Statistics (as of Mar 14, 2014)
 All games

TEAM STATISTICS	PVAMWBB	OPP
SCORING	1962	2105
Points per game	65.4	70.2
Scoring margin	-4.8	-
FIELD GOALS-ATT	654-1824	712-1786
Field goal pct	.359	.399
3 POINT FG-ATT	131-445	120-421
3-point FG pct	.294	.285
3-pt FG made per game	4.4	4.0
FREE THROWS-ATT	523-747	561-799
Free throw pct	.700	.702
F-Throws made per game	17.4	18.7
REBOUNDS	1148	1334
Rebounds per game	38.3	44.5
Rebounding margin	-6.2	-
ASSISTS	299	374
Assists per game	10.0	12.5
TURNOVERS	544	602
Turnovers per game	18.1	20.1
Turnover margin	+1.9	-
Assist/turnover ratio	0.5	0.6
STEALS	277	259
Steals per game	9.2	8.6
BLOCKS	122	105
Blocks per game	4.1	3.5
WINNING STREAK	2	-
Home win streak	0	-
ATTENDANCE	12592	25474
Home games-Avg/Game	10-1259	15-1596
Neutral site-Avg/Game	-	5-307

Score by Periods	1st	2nd	OT	OT2	Totals
Prairie View A&M	905	1009	18	30	1962
Opponents	975	1088	18	24	2105

PRAIRIE VIEW WOMEN'S BASKETBALL
 Prairie View A&M Team Game-by-Game (as of Mar 14, 2014)
 All games

TEAM STATISTICS

Opponent	Date	Score		Total		3-Pointers		Free throws		Rebounds				pf	a	t/o	blk	stl	pts	avg
				fg-fga	pct	3fg-fga	pct	ft-fta	pct	off	def	tot	avg							
RICE	11/08/13	63-77	L	21-60	.350	5-14	.357	16-25	.640	12	27	39	39.0	29	7	14	0	9	63	63.0
at Texas A&M	11/13/13	27-76	L	10-51	.196	3-16	.188	4-6	.667	12	24	36	37.5	16	6	30	1	3	27	45.0
at Florida State	11/17/13	37-88	L	12-55	.218	1-12	.083	12-19	.632	11	20	31	35.3	23	6	28	3	6	37	42.3
vs Stephen F. Austin	11/30/13	70-76	L	23-70	.329	8-14	.571	16-24	.667	20	18	38	36.0	32	10	13	2	7	70	49.2
at Houston	12/01/13	46-74	L	15-49	.306	0-6	.000	16-21	.762	9	16	25	33.8	24	5	18	1	7	46	48.6
at FIU	12/6/13	52-77	L	22-57	.386	3-5	.600	5-16	.313	10	23	33	33.7	20	9	19	5	10	52	49.2
vs James Madison	12/14/13	50-79	L	16-50	.320	2-9	.222	16-26	.615	10	22	32	33.4	22	9	21	5	9	50	49.3
vs DREXEL	12/15/13	45-53	L	13-50	.260	7-21	.333	12-15	.800	11	18	29	32.9	16	10	12	1	5	45	48.8
at Central Michigan	12/18/13	66-90	L	24-67	.358	4-17	.235	14-24	.583	12	29	41	33.8	25	9	22	1	9	66	50.7
at TCU	12/28/13	47-76	L	17-56	.304	4-16	.250	9-14	.643	12	19	31	33.5	21	9	22	3	14	47	50.3
SOUTHERN	1-4-14	74-88	L	22-74	.297	5-21	.238	25-36	.694	19	26	45	34.5	36	10	15	5	10	74	52.5
ALCORN STATE	1/6/14	71-68	W	23-60	.383	4-10	.400	21-27	.778	19	25	44	35.3	22	12	20	6	7	71	54.0
at Texas Southern	1/11/14	59-63	L	21-62	.339	3-16	.188	14-19	.737	14	25	39	35.6	23	7	18	2	8	59	54.4
at Jackson State	1/18/14	82-83	Lot	28-70	.400	3-12	.250	23-33	.697	24	32	56	37.1	35	12	28	7	11	82	56.4
at Grambling State Universi	01/20/14	72-61	W	28-68	.412	5-15	.333	11-13	.846	18	29	47	37.7	19	11	22	4	12	72	57.4
ARKANSAS-PINE BLUFF	01/25/14	75-62	W	23-51	.451	6-16	.375	23-28	.821	10	25	35	37.6	18	15	17	3	8	75	58.5
MISSISSIPPI VALLEY S	1/27/14	77-59	W	26-57	.456	8-17	.471	17-22	.773	12	27	39	37.6	17	12	18	6	11	77	59.6
at Alabama State	02/01/14	58-47	W	22-54	.407	3-9	.333	11-12	.917	10	24	34	37.4	15	12	14	4	6	58	59.5
at Alabama A&M	2/3/14	68-60	W	25-59	.424	4-15	.267	14-19	.737	15	25	40	37.6	13	15	17	8	8	68	59.9
TEXAS SOUTHERN	2/8/14	70-74	L	26-72	.361	3-19	.158	15-24	.625	21	21	42	37.8	16	11	9	6	10	70	60.5
JACKSON STATE	2/15/14	92-76	W	31-63	.492	8-18	.444	22-31	.710	13	23	36	37.7	21	11	24	6	7	92	62.0
GRAMBLING STATE	02/17/14	82-75	Wot	28-85	.329	3-20	.150	23-38	.605	23	31	54	38.5	28	11	21	9	16	82	62.9
at Arkansas-Pine Bluff	2/22/14	80-67	W	25-59	.424	6-15	.400	24-26	.923	8	29	37	38.4	18	11	11	4	12	80	63.6
at Mississippi Valley S	2-24-14	73-70	W	20-61	.328	7-21	.333	26-29	.897	13	24	37	38.3	16	6	15	2	10	73	64.0
ALABAMA A&M	03/01/14	98-77	W	32-67	.478	5-14	.357	29-43	.674	8	29	37	38.3	23	19	18	6	16	98	65.4
ALABAMA STATE	3/3/14	78-81	L	24-63	.381	6-16	.375	24-31	.774	14	20	34	38.1	19	10	13	1	5	78	65.8
at Southern U.	03/06/14	59-69	L	22-65	.338	7-23	.304	8-13	.615	14	23	37	38.1	17	11	13	1	10	59	65.6
at Alcorn State	03-08-14	48-55	L	14-64	.219	0-12	.000	20-31	.645	17	16	33	37.9	20	3	16	7	11	48	65.0
vs Alabama State	03/13/14	71-61	W	21-53	.396	4-10	.400	25-42	.595	16	26	42	38.0	18	9	19	7	15	71	65.2
vs Southern	03/14/14	72-43	W	20-52	.385	4-16	.250	28-40	.700	17	28	45	38.3	22	11	17	6	5	72	65.4
Prairie View A&M		1962		654-1824	.359	131-445	.294	523-747	.700	424	724	1148	38.3	644	299	544	122	277	1962	65.4
Opponents		2105		712-1786	.399	120-421	.285	561-799	.702	465	869	1334	44.5	662	374	602	105	259	2105	70.2

Games played: 30
 Points/game: 65.4
 FG Pct: 35.9
 3FG Pct: 29.4
 FT Pct: 70.0

Rebounds/game: 38.3
 Assists/game: 10.0
 Turnovers/game: 18.1
 Assist/turnover ratio: 0.5
 Steals/game: 9.2
 Blocks/game: 4.1

PRAIRIE VIEW WOMEN'S BASKETBALL
 Prairie View A&M Game-by-Game Highs (as of Mar 14, 2014)
 All games

Opponent	Date	Score	Points	Rebounds	Assists	Steals	Blocked shots
RICE	11/08/13	63-77	32-Jackson, Jeanette	9-Scott, Larissa	2-Scott, Larissa Washington, LaReah Jackson, Jeanette	5-Scott, Gabrielle	None
at Texas A&M	11/13/13	27-76	8-Washington, LaRea	13-Scott, Larissa	2-Scott, Larissa Jackson, Jeanette	2-Hampton-Finch, As	1-Scott, Larissa
at Florida State	11/17/13	37-88	7-Scott, Larissa	7-Brooks, Shamiya	2-Hampton-Finch, As Jackson, Jeanette	2-Stephens, Shaneec Washington, LaReah	2-Brooks, Shamiya
vs Stephen F. Austin	11/30/13	70-76	23-Jackson, Jeanette	7-Scott, Larissa	4-Jackson, Jeanette	4-Jackson, Jeanette	2-Scott, Larissa
at Houston	12/01/13	46-74	19-Hampton-Finch, As	7-Scott, Larissa	2-Jackson, Jeanette	2-Stephens, Shaneec Hampton-Finch, Ash Scott, Larissa	1-Scott, Larissa
at FIU	12/6/13	52-77	19-Jackson, Jeanette	8-Hampton-Finch, As	3-Jackson, Jeanette Washington, LaRea	5-Jackson, Jeanette	4-Scott, Larissa
vs James Madison	12/14/13	50-79	20-Jackson, Jeanette	8-Scott, Larissa	4-Jackson, Jeanette	3-Jackson, Jeanette	3-Scott, Larissa
vs DREXEL	12/15/13	45-53	23-Jackson, Jeanette	7-Scott, Larissa	4-Jackson, Jeanette	2-Scott, Larissa	1-Scott, Larissa
at Central Michigan	12/18/13	66-90	20-Jackson, Jeanette	12-Scott, Larissa	6-Jackson, Jeanette	4-Scott, Larissa	1-Scott, Larissa
at TCU	12/28/13	47-76	12-Scott, Larissa	11-Scott, Larissa	4-Jackson, Jeanette	4-Hampton-Finch, As	1-Hampton-Finch, As Scott, Larissa Washington, LaRea
SOUTHERN	1-4-14	74-88	25-Jackson, Jeanette	14-Scott, Larissa	3-Jackson, Jeanette Washington, LaRea	4-Jackson, Jeanette	3-Scott, Larissa
ALCORN STATE	1/6/14	71-68	16-Scott, Gabrielle	13-Scott, Larissa	9-Jackson, Jeanette	3-Jackson, Jeanette	3-Brooks, Shamiya
at Texas Southern	1/11/14	59-63	30-Jackson, Jeanette	11-Scott, Larissa Hampton-Finch, Ash	2-Scott, Gabrielle Jackson, Jeanette Washington, LaRea	3-Washington, LaRea Jackson, Jeanette	2-Brooks, Shamiya
at Jackson State	1/18/14	82-83	21-Parker, Alexis	11-Hampton-Finch, As Brooks, Shamiya	4-Washington, LaRea	4-Washington, LaRea	5-Brooks, Shamiya
at Grambling State Universit	01/20/14	72-61	29-Jackson, Jeanette	9-Washington, LaRea	4-Washington, LaRea	5-Jackson, Jeanette	2-Jackson, Jeanette
ARKANSAS-PINE BLUFF	01/25/14	75-62	21-Jackson, Jeanette	10-Washington, LaRe	7-Washington, LaRea	4-Washington, LaRea	3-Brooks, Shamiya
MISSISSIPPI VALLEY S	1/27/14	77-59	24-Washington, LaRe	12-Brooks, Shamiya	7-Jackson, Jeanette	4-Jackson, Jeanette	4-Brooks, Shamiya
at Alabama State	02/01/14	58-47	16-Parker, Alexis Jackson, Jeanette	9-Brooks, Shamiya	6-Washington, LaRea	3-Scott, Gabrielle	2-Brooks, Shamiya
at Alabama A&M	2/3/14	68-60	19-Brooks, Shamiya	11-Brooks, Shamiya	7-Jackson, Jeanette	3-Washington, LaRea	5-Brooks, Shamiya
TEXAS SOUTHERN	2/8/14	70-74	27-Jackson, Jeanette	13-Brooks, Shamiya	5-Jackson, Jeanette	3-Jackson, Jeanette	4-Brooks, Shamiya
JACKSON STATE	2/15/14	92-76	28-Jackson, Jeanette	11-Brooks, Shamiya	4-Washington, LaRea	2-Washington, LaRea Scott, Gabrielle	3-Brooks, Shamiya
GRAMBLING STATE	02/17/14	82-75	22-Jackson, Jeanette	9-Scott, Larissa	4-Washington, LaRea	4-Jackson, Jeanette Washington, LaRea	3-Scott, Larissa
at Arkansas-Pine Bluff	2/22/14	80-67	25-Jackson, Jeanette	8-Brooks, Shamiya	4-Jackson, Jeanette Washington, LaRea	5-Jackson, Jeanette	3-Brooks, Shamiya
at Mississippi Valley S	2-24-14	73-70	19-Jackson, Jeanette	8-Parker, Alexis	2-Scott, Gabrielle	4-Jackson, Jeanette	1-Hampton-Finch, As Brooks, Shamiya
ALABAMA A&M	03/01/14	98-77	22-Brooks, Shamiya	7-Washington, LaRea	12-Jackson, Jeanette	5-Parker, Alexis	2-Hampton-Finch, As Brooks, Shamiya
ALABAMA STATE	3/3/14	78-81	23-Jackson, Jeanette	7-Brooks, Shamiya	4-Jackson, Jeanette	2-Jackson, Jeanette	1-Brooks, Shamiya
at Southern U.	03/06/14	59-69	15-Scott, Gabrielle	12-Hampton-Finch, As	4-Jackson, Jeanette	4-Hampton-Finch, As	1-Brooks, Shamiya
at Alcorn State	03-08-14	48-55	21-Jackson, Jeanette	7-Overshown, Taylor	1-Overshown, Taylor Hampton-Finch, Ash Washington, LaRea	4-Jackson, Jeanette	3-Brooks, Shamiya
vs Alabama State	03/13/14	71-61	24-Jackson, Jeanette	9-Brooks, Shamiya	3-Washington, LaRea Jackson, Jeanette	6-Washington, LaRea	4-Brooks, Shamiya
vs Southern	03/14/14	72-43	18-Jackson, Jeanette	11-Brooks, Shamiya	5-Washington, LaRea	2-Jackson, Jeanette Washington, LaRea	2-Brooks, Shamiya Scott, Larissa

PRAIRIE VIEW WOMEN'S BASKETBALL
 Prairie View A&M Team High/Low Analysis (as of Mar 14, 2014)
 All games

Prairie View A&M - TEAM GAME HIGHS

POINTS	98		ALABAMA A&M (03/01/14)
	92		JACKSON STATE (2/15/14)
	82		GRAMBLING STATE (02/17/14)
	82		at Jackson State (1/18/14)
	80		at Arkansas-Pine Bluff (2/22/14)
FIELD GOALS MADE	32		ALABAMA A&M (03/01/14)
	31		JACKSON STATE (2/15/14)
FIELD GOAL ATTEMPTS	85		GRAMBLING STATE (02/17/14)
	74		SOUTHERN (1-4-14)
FIELD GOAL PERCENTAGE	.492	(31-63)	JACKSON STATE (2/15/14)
	.478	(32-67)	ALABAMA A&M (03/01/14)
3 PT FIELD GOALS MADE	8		JACKSON STATE (2/15/14)
	8		MISSISSIPPI VALLEY S (1/27/14)
	8		vs Stephen F. Austin (11/30/13)
3 PT FG ATTEMPTS	23		at Southern U. (03/06/14)
	21		at Mississippi Valley S (2-24-14)
	21		SOUTHERN (1-4-14)
	21		vs DREXEL (12/15/13)
3 PT FG PERCENTAGE	.600	(3-5)	at FIU (12/6/13)
	.571	(8-14)	vs Stephen F. Austin (11/30/13)
FREE THROWS MADE	29		ALABAMA A&M (03/01/14)
	28		vs Southern (03/14/14)
FREE THROW ATTEMPTS	43		ALABAMA A&M (03/01/14)
	42		vs Alabama State (03/13/14)
FREE THROW PERCENTAGE	.923	(24-26)	at Arkansas-Pine Bluff (2/22/14)
	.917	(11-12)	at Alabama State (02/01/14)
REBOUNDS	56		at Jackson State (1/18/14)
	54		GRAMBLING STATE (02/17/14)
ASSISTS	19		ALABAMA A&M (03/01/14)
	15		at Alabama A&M (2/3/14)
	15		ARKANSAS-PINE BLUFF (01/25/14)
STEALS	16		ALABAMA A&M (03/01/14)
	16		GRAMBLING STATE (02/17/14)
BLOCKED SHOTS	9		GRAMBLING STATE (02/17/14)
	8		at Alabama A&M (2/3/14)
TURNOVERS	30		at Texas A&M (11/13/13)
	28		at Jackson State (1/18/14)
	28		at Florida State (11/17/13)
FOULS	36		SOUTHERN (1-4-14)
	35		at Jackson State (1/18/14)

PRAIRIE VIEW WOMEN'S BASKETBALL
 Prairie View A&M High/Low Analysis (as of Mar 14, 2014)
 All games

Opponent - GAME HIGHS

POINTS	90		at Central Michigan (12/18/13)
	88		SOUTHERN (1-4-14)
	88		at Florida State (11/17/13)
	83		at Jackson State (1/18/14)
	81		ALABAMA STATE (3/3/14)
FIELD GOALS MADE	34		at Texas A&M (11/13/13)
	29		at Florida State (11/17/13)
FIELD GOAL ATTEMPTS	80		GRAMBLING STATE (02/17/14)
	69		vs Alabama State (03/13/14)
	69		at Central Michigan (12/18/13)
FIELD GOAL PERCENTAGE	.531	(34-64)	at Texas A&M (11/13/13)
	.492	(29-59)	at Florida State (11/17/13)
3 PT FIELD GOALS MADE	9		at Central Michigan (12/18/13)
	8		vs DREXEL (12/15/13)
3 PT FG ATTEMPTS	25		at Central Michigan (12/18/13)
	23		at Alabama State (02/01/14)
3 PT FG PERCENTAGE	.500	(7-14)	ALABAMA STATE (3/3/14)
	.444	(8-18)	vs DREXEL (12/15/13)
FREE THROWS MADE	33		at Jackson State (1/18/14)
	33		SOUTHERN (1-4-14)
FREE THROW ATTEMPTS	55		SOUTHERN (1-4-14)
	47		at Jackson State (1/18/14)
FREE THROW PERCENTAGE	.913	(21-23)	at FIU (12/6/13)
	.826	(19-23)	at Alcorn State (03-08-14)
REBOUNDS	72		GRAMBLING STATE (02/17/14)
	59		SOUTHERN (1-4-14)
ASSISTS	26		at Texas A&M (11/13/13)
	17		at FIU (12/6/13)
STEALS	17		at Florida State (11/17/13)
	14		at Grambling State University (01/20/14)
	14		at Central Michigan (12/18/13)
BLOCKED SHOTS	8		vs James Madison (12/14/13)
	7		at Alabama State (02/01/14)
TURNOVERS	35		GRAMBLING STATE (02/17/14)
	31		ALABAMA A&M (03/01/14)
FOULS	31		vs Alabama State (03/13/14)
	31		GRAMBLING STATE (02/17/14)

PRAIRIE VIEW WOMEN'S BASKETBALL
 Prairie View A&M High/Low Analysis (as of Mar 14, 2014)
 All games

Prairie View A&M - GAME LOWS

POINTS	27		at Texas A&M (11/13/13)
	37		at Florida State (11/17/13)
	45		vs DREXEL (12/15/13)
	46		at Houston (12/01/13)
	47		at TCU (12/28/13)
FIELD GOALS MADE	10		at Texas A&M (11/13/13)
	12		at Florida State (11/17/13)
FIELD GOAL ATTEMPTS	49		at Houston (12/01/13)
	50		vs James Madison (12/14/13)
	50		vs DREXEL (12/15/13)
FIELD GOAL PERCENTAGE	.196	(10-51)	at Texas A&M (11/13/13)
	.218	(12-55)	at Florida State (11/17/13)
3 PT FIELD GOALS MADE	0		at Houston (12/01/13)
	0		at Alcorn State (03-08-14)
3 PT FG ATTEMPTS	5		at FIU (12/6/13)
	6		at Houston (12/01/13)
3 PT FG PERCENTAGE	.000	(0-6)	at Houston (12/01/13)
	.000	(0-12)	at Alcorn State (03-08-14)
FREE THROWS MADE	4		at Texas A&M (11/13/13)
	5		at FIU (12/6/13)
FREE THROW ATTEMPTS	6		at Texas A&M (11/13/13)
	12		at Alabama State (02/01/14)
FREE THROW PERCENTAGE	.313	(5-16)	at FIU (12/6/13)
	.583	(14-24)	at Central Michigan (12/18/13)
REBOUNDS	25		at Houston (12/01/13)
	29		vs DREXEL (12/15/13)
ASSISTS	3		at Alcorn State (03-08-14)
	5		at Houston (12/01/13)
STEALS	3		at Texas A&M (11/13/13)
	5		vs DREXEL (12/15/13)
	5		ALABAMA STATE (3/3/14)
	5		vs Southern (03/14/14)
	5		RICE (11/08/13)
BLOCKED SHOTS	0		RICE (11/08/13)
	1		at Texas A&M (11/13/13)
	1		at Houston (12/01/13)
	1		vs DREXEL (12/15/13)
	1		at Central Michigan (12/18/13)
TURNOVERS	1		ALABAMA STATE (3/3/14)
	1		at Southern U. (03/06/14)
	9		TEXAS SOUTHERN (2/8/14)
	11		at Arkansas-Pine Bluff (2/22/14)
	13		at Alabama A&M (2/3/14)
FOULS	13		at Alabama A&M (2/3/14)
	15		at Alabama State (02/01/14)

PRAIRIE VIEW WOMEN'S BASKETBALL
Prairie View A&M High/Low Analysis (as of Mar 14, 2014)
All games

Opponent - GAME LOWS

POINTS	43		vs Southern (03/14/14)
	47		at Alabama State (02/01/14)
	53		vs DREXEL (12/15/13)
	55		at Alcorn State (03-08-14)
	59		MISSISSIPPI VALLEY S (1/27/14)
FIELD GOALS MADE	15		vs Southern (03/14/14)
	17		at Alabama State (02/01/14)
FIELD GOAL ATTEMPTS	38		vs DREXEL (12/15/13)
	47		vs Stephen F. Austin (11/30/13)
FIELD GOAL PERCENTAGE	.254	(15-59)	vs Southern (03/14/14)
	.279	(17-61)	at Alabama State (02/01/14)
3 PT FIELD GOALS MADE	0		at Alcorn State (03-08-14)
	1		RICE (11/08/13)
	1		at Texas A&M (11/13/13)
	1		SOUTHERN (1-4-14)
	1		at Texas Southern (1/11/14)
3 PT FG ATTEMPTS	1		vs Southern (03/14/14)
	3		at Texas Southern (1/11/14)
3 PT FG PERCENTAGE	.000	(0-5)	at Alcorn State (03-08-14)
	.067	(1-15)	vs Southern (03/14/14)
FREE THROWS MADE	7		at Texas A&M (11/13/13)
	8		at Alabama State (02/01/14)
FREE THROW ATTEMPTS	9		at Texas A&M (11/13/13)
	12		vs DREXEL (12/15/13)
	12		at Alabama A&M (2/3/14)
FREE THROW PERCENTAGE	.522	(12-23)	vs Southern (03/14/14)
	.533	(8-15)	at Alabama State (02/01/14)
REBOUNDS	30		MISSISSIPPI VALLEY S (1/27/14)
	32		vs DREXEL (12/15/13)
ASSISTS	4		at Grambling State University (01/20/14)
	7		at Texas Southern (1/11/14)
	7		MISSISSIPPI VALLEY S (1/27/14)
	7		at Alcorn State (03-08-14)
STEALS	3		RICE (11/08/13)
	3		at Arkansas-Pine Bluff (2/22/14)
BLOCKED SHOTS	1		at Central Michigan (12/18/13)
	1		ALCORN STATE (1/6/14)
	1		ARKANSAS-PINE BLUFF (01/25/14)
	1		at Alabama A&M (2/3/14)
	1		ALABAMA A&M (03/01/14)
	1		at Southern U. (03/06/14)
TURNOVERS	12		at Texas A&M (11/13/13)
	14		SOUTHERN (1-4-14)
FOULS	11		at Texas A&M (11/13/13)
	15		at Grambling State University (01/20/14)

PRAIRIE VIEW WOMEN'S BASKETBALL
 Prairie View A&M Player High/Low Analysis (as of Mar 14, 2014)
 All games

Prairie View A&M - INDIVIDUAL GAME HIGHS

Points	32		Jackson, Jeanette vs RICE (11/08/13)
	30		Jackson, Jeanette at Texas Southern (1/11/14)
	29		Jackson, Jeanette at Grambling State University (01/20/14)
	28		Jackson, Jeanette vs Jackson State (2/15/14)
	27		Jackson, Jeanette vs Texas Southern (2/8/14)
Field Goals Made	12		Jackson, Jeanette at Grambling State University (01/20/14)
	10		Brooks, Shamiya vs Alabama A&M (03/01/14)
	10		Jackson, Jeanette vs Jackson State (2/15/14)
	10		Jackson, Jeanette at Texas Southern (1/11/14)
Field Goal Att.	27		Jackson, Jeanette vs Grambling State (02/17/14)
	25		Jackson, Jeanette at Alcorn State (03-08-14)
FG Pct (min 5 made)	.909	(10-11)	Brooks, Shamiya vs Alabama A&M (03/01/14)
	.833	(5-6)	Overshown, Taylor vs Alabama A&M (03/01/14)
	.833	(5-6)	Hampton-Finch, Asha vs Arkansas-Pine Bluff (01/25/14)
3-Point FG Made	5		Jackson, Jeanette vs Stephen F. Austin (11/30/13)
	4		Scott, Gabrielle vs Alabama State (3/3/14)
	4		Jackson, Jeanette vs Jackson State (2/15/14)
	4		Scott, Gabrielle vs Mississippi Valley S (1/27/14)
	4		Jackson, Jeanette vs Arkansas-Pine Bluff (01/25/14)
	4		Scott, Gabrielle vs Alcorn State (1/6/14)
	4		Jackson, Jeanette vs DREXEL (12/15/13)
3-Point FG Att.	10		Jackson, Jeanette at Texas Southern (1/11/14)
	10		Jackson, Jeanette vs DREXEL (12/15/13)
3-Pt FG Pct (min 2 made)	1.000	(2-2)	Washington, LaReahn vs Mississippi Valley S (1/27/14)
	.800	(4-5)	Scott, Gabrielle vs Alcorn State (1/6/14)
Free Throws Made	13		Jackson, Jeanette vs RICE (11/08/13)
	11		Jackson, Jeanette vs Alabama State (03/13/14)
	11		Hampton-Finch, Asha at Houston (12/01/13)
Free Throw Att.	16		Jackson, Jeanette vs RICE (11/08/13)
	14		Jackson, Jeanette vs Alabama State (03/13/14)
	14		Jackson, Jeanette at Alcorn State (03-08-14)
	14		Jackson, Jeanette vs Alabama A&M (03/01/14)
FT Pct (min 3 made)	1.000	(10-10)	Jackson, Jeanette vs Alabama State (3/3/14)
	1.000	(10-10)	Jackson, Jeanette at Arkansas-Pine Bluff (2/22/14)
	1.000	(10-10)	Jackson, Jeanette vs Southern (1-4-14)
	1.000	(8-8)	Parker, Alexis at Mississippi Valley S (2-24-14)
	1.000	(8-8)	Jackson, Jeanette at Jackson State (1/18/14)
	1.000	(6-6)	Scott, Gabrielle vs Southern (03/14/14)
	1.000	(6-6)	Brooks, Shamiya at Arkansas-Pine Bluff (2/22/14)
	1.000	(6-6)	Jackson, Jeanette at Alabama A&M (2/3/14)
	1.000	(4-4)	Scott, Gabrielle vs Alabama A&M (03/01/14)
	1.000	(4-4)	Washington, LaReahn at Mississippi Valley S (2-24-14)
	1.000	(4-4)	Washington, LaReahn at Arkansas-Pine Bluff (2/22/14)
	1.000	(4-4)	Parker, Alexis at Alabama State (02/01/14)
	1.000	(4-4)	Jackson, Jeanette at Alabama State (02/01/14)
	1.000	(4-4)	Washington, LaReahn vs Stephen F. Austin (11/30/13)
	1.000	(3-3)	Scott, Gabrielle at Mississippi Valley S (2-24-14)
	1.000	(3-3)	Scott, Gabrielle vs Mississippi Valley S (1/27/14)
	1.000	(3-3)	Jackson, Jeanette at Grambling State University (01/20/14)
	1.000	(3-3)	Scott, Larissa vs Southern (1-4-14)
	1.000	(3-3)	Jackson, Jeanette at FIU (12/6/13)
Rebounds	14		Scott, Larissa vs Southern (1-4-14)
	13		Brooks, Shamiya vs Texas Southern (2/8/14)

	13	Scott, Larissa vs Alcorn State (1/6/14)
	13	Scott, Larissa at Texas A&M (11/13/13)
Assists	12	Jackson, Jeanette vs Alabama A&M (03/01/14)
	9	Jackson, Jeanette vs Alcorn State (1/6/14)
Steals	6	Washington, LaReahn vs Alabama State (03/13/14)
	5	Jackson, Jeanette vs Alabama State (03/13/14)
	5	Parker, Alexis vs Alabama A&M (03/01/14)
	5	Jackson, Jeanette at Arkansas-Pine Bluff (2/22/14)
	5	Jackson, Jeanette at Grambling State University (01/20/14)
	5	Jackson, Jeanette at FIU (12/6/13)
	5	Scott, Gabrielle vs RICE (11/08/13)
Blocked Shots	5	Brooks, Shamiya at Alabama A&M (2/3/14)
	5	Brooks, Shamiya at Jackson State (1/18/14)
Turnovers	10	Washington,LaReahn at Florida State (11/17/13)
	9	Jackson, Jeanette at Texas A&M (11/13/13)
Fouls	5	Brooks, Shamiya vs Southern (03/14/14)
	5	Washington, LaReahn vs Alabama State (3/3/14)
	5	Hampton-Finch, Asha vs Alabama A&M (03/01/14)
	5	Brooks, Shamiya at Arkansas-Pine Bluff (2/22/14)
	5	Jackson, Jeanette at Arkansas-Pine Bluff (2/22/14)
	5	Brooks, Shamiya vs Grambling State (02/17/14)
	5	Hampton-Finch, Asha vs Grambling State (02/17/14)
	5	Brooks, Shamiya vs Jackson State (2/15/14)
	5	Parker, Alexis vs Arkansas-Pine Bluff (01/25/14)
	5	Stephens, Shaneece at Jackson State (1/18/14)
	5	Hampton-Finch, Asha at Jackson State (1/18/14)
	5	Scott, Gabrielle at Jackson State (1/18/14)
	5	Brooks, Shamiya at Jackson State (1/18/14)
	5	Washington, LaReahn at Jackson State (1/18/14)
	5	Washington, LaReahn at Texas Southern (1/11/14)
	5	Hampton-Finch, Asha at Texas Southern (1/11/14)
	5	Brooks, Shamiya vs Alcorn State (1/6/14)
	5	Brooks, Shamiya vs Southern (1-4-14)
	5	Scott, Gabrielle vs Southern (1-4-14)
	5	Hampton-Finch, Asha vs Southern (1-4-14)
	5	Washington, LaReahn vs Southern (1-4-14)
	5	Brooks, Shamiya vs James Madison (12/14/13)
	5	Washington, LaReahn vs James Madison (12/14/13)
	5	Jackson, Jeanette at FIU (12/6/13)
	5	Hampton-Finch, Asha vs Stephen F. Austin (11/30/13)
	5	Jackson, Jeanette at Texas A&M (11/13/13)
	5	Washington,LaReahn vs RICE (11/08/13)

PRAIRIE VIEW WOMEN'S BASKETBALL
 Prairie View A&M Opponent High/Low Analysis (as of Mar 14, 2014)
 All games

OPPONENT INDIVIDUAL GAME HIGHS

Points	33		KUSTER, Jessica vs RICE (11/08/13)
	29		Sidney, Brianna vs Texas Southern (2/8/14)
	25		Smith, Nakiya vs Alabama State (3/3/14)
	25		COLEY, Jerica at FIU (12/6/13)
	24		Frost, Tierro vs Alcorn State (1/6/14)
	24		Brown, Brittany at Florida State (11/17/13)
Field Goals Made	11		KUSTER, Jessica vs RICE (11/08/13)
	9		Sidney, Brianna vs Texas Southern (2/8/14)
	9		Jefferson, Jasmine vs Southern (1-4-14)
Field Goal Att.	22		Frost, Tierro vs Alcorn State (1/6/14)
	21		Miller, Joanna at Grambling State University (01/20/14)
FG Pct (min 5 made)	1.000	(5-5)	Ferguson, Ashley at Texas Southern (1/11/14)
	.778	(7-9)	Karla Gilbert at Texas A&M (11/13/13)
3-Point FG Made	6		Tucker, Kayla vs Alabama State (3/3/14)
	5		Sidney, Brianna vs Texas Southern (2/8/14)
3-Point FG Att.	12		Tucker, Kayla at Alabama State (02/01/14)
	11		Coleman, Kendra at Southern U. (03/06/14)
3-Pt FG Pct (min 2 made)	1.000	(2-2)	Christina Lasane vs Arkansas-Pine Bluff (01/25/14)
	1.000	(2-2)	Bianca Winslow at Houston (12/01/13)
	1.000	(2-2)	Branch, Brentney vs Stephen F. Austin (11/30/13)
Free Throws Made	11		Smith, Nakiya vs Alabama State (3/3/14)
	11		Frost, Tierro vs Alcorn State (1/6/14)
Free Throw Att.	14		Smith, Nakiya vs Alabama State (3/3/14)
	13		Sanders, Adrian vs Southern (1-4-14)
	13		TURNER, Da'Jourie at Central Michigan (12/18/13)
	13		Slaughter, Ivey at Florida State (11/17/13)
FT Pct (min 3 made)	1.000	(10-10)	KUSTER, Jessica vs RICE (11/08/13)
	1.000	(8-8)	COLEY, Jerica at FIU (12/6/13)
	1.000	(7-7)	Miller, Joanna at Grambling State University (01/20/14)
	1.000	(6-6)	Sanders, Jasmyne at Mississippi Valley S (2-24-14)
	1.000	(6-6)	DiGUILIO, Niki at Central Michigan (12/18/13)
	1.000	(5-5)	McNichols, Ashtin at Alcorn State (03-08-14)
	1.000	(5-5)	Sanders, Jasmyne vs Mississippi Valley S (1/27/14)
	1.000	(4-4)	Jefferson, Jasmine at Southern U. (03/06/14)
	1.000	(4-4)	Coleman, Kendra at Southern U. (03/06/14)
	1.000	(4-4)	Tucker, Kayla vs Alabama State (3/3/14)
	1.000	(4-4)	Wright, Brittney vs Alabama State (3/3/14)
	1.000	(4-4)	Strickland, Alyssa vs Alabama A&M (03/01/14)
	1.000	(4-4)	Christina Lasane at Arkansas-Pine Bluff (2/22/14)
	1.000	(4-4)	Ndongo, Ekwara vs Jackson State (2/15/14)
	1.000	(4-4)	Brothern, Dominique vs Jackson State (2/15/14)
	1.000	(4-4)	Ross, Alisa vs Jackson State (2/15/14)
	1.000	(4-4)	BRACEY, Jas'Mine at Central Michigan (12/18/13)
	1.000	(4-4)	Gwathmey, Jazmon vs James Madison (12/14/13)
	1.000	(4-4)	Tyler Gilbert at Houston (12/01/13)
	1.000	(3-3)	Paige, Kierra vs Alabama State (03/13/14)
	1.000	(3-3)	Wilson-Reid, Angelic at Alcorn State (03-08-14)
	1.000	(3-3)	Johnson, Ebony vs Alabama A&M (03/01/14)
	1.000	(3-3)	Sanders, Jasmine at Alabama A&M (2/3/14)
	1.000	(3-3)	Medley, Zahna at TCU (12/28/13)
	1.000	(3-3)	IDOM, Kamika at FIU (12/6/13)
	1.000	(3-3)	Alexia Sanders at Houston (12/01/13)
Rebounds	16		Jefferson, Jasmine vs Southern (03/14/14)

	16	Jefferson, Jasmine vs Southern (1-4-14)
	16	BRADFORD, Crystal at Central Michigan (12/18/13)
Assists	10	Jordan Jones at Texas A&M (11/13/13)
	8	Courtney Walker at Texas A&M (11/13/13)
Steals	7	BRADFORD, Crystal at Central Michigan (12/18/13)
	5	Ndongo, Ekwara at Jackson State (1/18/14)
	5	Brown, Brittany at Florida State (11/17/13)
	5	Jordan Jones at Texas A&M (11/13/13)
Blocked Shots	4	Wells, Henrietta at Alcorn State (03-08-14)
	3	Simmons, Morgan vs Texas Southern (2/8/14)
	3	Alford, Quentori at Alabama State (02/01/14)
	3	Weathers, A'Shanti vs Mississippi Valley S (1/27/14)
	3	Gwathmey, Jazmon vs James Madison (12/14/13)
Turnovers	7	Patrick, Dominique vs Grambling State (02/17/14)
	6	Arrington, Taila vs Alabama State (03/13/14)
	6	Weathers, A'Shanti at Mississippi Valley S (2-24-14)
	6	Miller, Joanna vs Grambling State (02/17/14)
	6	Anderson, Tyler vs Grambling State (02/17/14)
	6	Lynn, Ayanna vs Jackson State (2/15/14)
	6	Williams, Sarah at Texas Southern (1/11/14)
	6	Smith, Alexis vs DREXEL (12/15/13)
	6	Creighton, Meghan vs DREXEL (12/15/13)
	6	Jones, Morgan at Florida State (11/17/13)
Fouls	5	Sanders, Adrian vs Southern (03/14/14)
	5	Robinson, Kenidi vs Southern (03/14/14)
	5	Wright, Brittney vs Alabama State (03/13/14)
	5	Cunningham, Jasmine at Alcorn State (03-08-14)
	5	Richardson, Shabr'an vs Alabama A&M (03/01/14)
	5	Sanders, Jasmyne at Mississippi Valley S (2-24-14)
	5	Beals, Ashley at Mississippi Valley S (2-24-14)
	5	Godbolt, Jasmine vs Grambling State (02/17/14)
	5	Mitchell-Harmel, Jor vs Grambling State (02/17/14)
	5	Chambers, Dennisha vs Grambling State (02/17/14)
	5	Hardy-Fuller, Ayanna vs Jackson State (2/15/14)
	5	Johnson, Alexis vs Texas Southern (2/8/14)
	5	Sanders, Jasmyne vs Mississippi Valley S (1/27/14)
	5	Carlisha Walker vs Arkansas-Pine Bluff (01/25/14)
	5	Mollie Campbell vs Arkansas-Pine Bluff (01/25/14)
	5	St. John, Ke'ra at Jackson State (1/18/14)
	5	Cunningham, Jasmine vs Alcorn State (1/6/14)
	5	McNichols, Ashtin vs Alcorn State (1/6/14)
	5	Diaz, Caitlin at TCU (12/28/13)
	5	Schluth, Jackie vs DREXEL (12/15/13)
	5	Hall, Precious vs James Madison (12/14/13)
	5	Carter, Antionette vs Stephen F. Austin (11/30/13)
	5	Slaughter, Ivey at Florida State (11/17/13)